

HARTZELL PROPELLER INC.

ALERT SERVICE BULLETIN

TRANSMITTAL SHEET

HC-ASB-61-322

Propeller - Blade Replacement

August 27, 2012

This page transmits a revision to Alert Service Bulletin HC-ASB-61-322.

- Original Issue, dated Jan 14/11
- Revision 1, dated Aug 27/12

Propeller assemblies and/or blades that have previously complied with the terminating action required in a previous version of this Alert Service Bulletin are not affected.

FAA approval has been obtained on technical data in this publication that affects type design.

Changes are shown by a change bar in the left margin of the revised pages.

This revision is issued to change the following in the Alert Service Bulletin:

- Revises format and CAUTIONS to current requirements
- Revises the Warranty period in the Appendix for assembled propellers
- Removes expired Warranty programs from the Appendix

HARTZELL PROPELLER INC.

ALERT SERVICE BULLETIN

TRANSMITTAL SHEET

HC-ASB-61-322

Propeller - Blade Replacement

(This page is intentionally blank.)

HARTZELL PROPELLER INC.
ALERT SERVICE BULLETIN
HC-ASB-61-322
Propeller - Blade Replacement

1. Planning Information

A. Effectivity

- (1) Hartzell compact propeller models ()HC-()()Y()-() with "Y" shank, aluminum blades are affected by this Alert Service Bulletin. Refer to Table 1-() for the list of affected serial numbers.
 - (a) Many affected blades were shipped from Hartzell Propeller as individual blades (not in a propeller assembly). These individual blades could be installed in Hartzell compact, constant speed propeller models ()HC-()()Y()-().
 - (b) Affected blades were manufactured from 1999 through 2004.

CAUTION: DO NOT USE OBSOLETE OR OUTDATED INFORMATION. PERFORM ALL INSPECTIONS OR WORK IN ACCORDANCE WITH THE MOST RECENT REVISION OF THIS ALERT SERVICE BULLETIN. INFORMATION CONTAINED IN THIS ALERT SERVICE BULLETIN MAY BE SIGNIFICANTLY CHANGED FROM EARLIER REVISIONS. FAILURE TO COMPLY WITH THIS SERVICE LETTER OR THE USE OF OBSOLETE INFORMATION MAY RESULT IN DEATH, SERIOUS BODILY INJURY, AND/OR SUBSTANTIAL PROPERTY DAMAGE. REFER TO THE SERVICE BULLETIN INDEX FOR THE MOST RECENT REVISION LEVEL OF THIS ALERT SERVICE BULLETIN.

B. Concurrent Requirements

- (1) Additional service documents may apply to the components/propellers affected by this Alert Service Bulletin. Compliance with additional service documents may be necessary in conjunction with the completion of the Accomplishment Instructions in this Alert Service Bulletin. Refer to the Hartzell Propeller website at www.hartzellprop.com for a cross-reference of service documents.

HARTZELL PROPELLER INC.

ALERT SERVICE BULLETIN

HC-ASB-61-322

Propeller - Blade Replacement

C. Reason

WARNING: UNUSUAL OR ABNORMAL GREASE LEAKAGE OR VIBRATION, WHERE THE CONDITION INITIATED SUDDENLY, CAN BE AN INDICATION OF A FAILING PROPELLER BLADE OR BLADE RETENTION COMPONENT. AN INFLIGHT BLADE SEPARATION MAY RESULT IN DEATH, SERIOUS BODILY INJURY, AND/OR SUBSTANTIAL PROPERTY DAMAGE. UNUSUAL OR ABNORMAL GREASE LEAKAGE OR VIBRATION DEMANDS IMMEDIATE INSPECTION FOR POSSIBLE CRACKED HUB (FOR FURTHER INFORMATION ABOUT THIS SUBJECT REFER TO HARTZELL SERVICE LETTER HC-SL-61-165).

- (1) During dye penetrant inspection at overhaul, one blade was found to have an indication in the blade bearing bore. This indication was determined to be caused by a unique condition in the aluminum forging from the vendor.
- (2) All blades machined from the same forging lot may have this condition.
- (3) Regulatory action is expected.

D. Description

- (1) This document provides Instructions for Continued Airworthiness (ICA).
- (2) This Alert Service Bulletin requires replacement of all affected blades.
- (3) This Alert Service Bulletin requires all affected blades to be permanently retired from service.
- (4) This Alert Service Bulletin requires completion of the Compliance/Order Form, from the Appendix in this Alert Service Bulletin, for all affected blades.

E. Compliance

- (1) For assembled propellers, compliance is required within 250 flight hours, at next major disassembly, or no later than February 29, 2012, whichever occurs first.

NOTE: Aluminum hub propeller major disassembly is defined as any repair that requires the hub halves to be separated.

- (2) This Alert Service Bulletin requires the replacement of all existing stock/ inventory of affected blades. Compliance is required before installation and no later than February 29, 2012.
- (3) Compliance with these Accomplishment Instructions is terminating action for this Alert Service Bulletin.

HARTZELL PROPELLER INC.

ALERT SERVICE BULLETIN

HC-ASB-61-322

Propeller - Blade Replacement

- (4) A Compliance/Order Form must be received by Hartzell Propeller for compliance to be complete.
 - (a) If blades are not ordered from Hartzell Propeller, the Compliance/Order Form must still be completed and submitted.
 - (b) The Compliance/Order Form is in the Appendix in this Alert Service Bulletin and is available electronically at www.hartzellprop.com.

F. Approval

- (1) FAA approval has been obtained on technical data in this publication that affects type design.

G. Manpower

- (1) No additional man hours are required when performed in conjunction with propeller overhaul or major disassembly/repair.
- (2) When performed outside of propeller overhaul, the following man hours are required:

<u>Propeller Model</u>	<u>Man hours Required</u>
()HC()2Y()-()	4.0 hours
()HC()3Y()-()	5.0 hours
()HC()4Y()-()	6.0 hours

H. Weight and Balance

- (1) Not changed

I. Electrical Load Data

- (1) Not changed

CAUTION: DO NOT USE OBSOLETE OR OUTDATED INFORMATION. PERFORM ALL INSPECTIONS OR WORK IN ACCORDANCE WITH THE MOST RECENT REVISION OF A DOCUMENT.

J. References

- (1) Hartzell Compact and Lightweight Compact Non-Feathering (-1) and Aerobic (-4) Propeller Overhaul and Maintenance Manual 113B (61-10-13)
- (2) Hartzell Propeller Owner's Manual 115N (61-00-15)
- (3) Hartzell Compact Constant Speed and Feathering Propeller Overhaul and Maintenance Manual 117D (61-10-17)

HARTZELL PROPELLER INC.
ALERT SERVICE BULLETIN
HC-ASB-61-322
Propeller - Blade Replacement

- (4) Hartzell Propeller Operator's Manual 136
- (5) Hartzell Standard Practices Manual 202A (61-01-02)

K. Other Publications Affected

- (1) Hartzell Aluminum Blade Overhaul Manual 133C (61-13-33)

2. Material Information

A. Material Necessary for Each Propeller/Blade

- (1) A replacement blade is required for each affected blade. Refer to the Appendix in this Alert Service Bulletin for additional information.
- (2) No additional materials are required when performed in conjunction with propeller overhaul.
- (3) Refer to the applicable Hartzell Propeller Overhaul Manual for a list of required replacement components when performed outside of overhaul.

B. Consumables

- (1) No additional consumables are required when performed in conjunction with propeller overhaul.
- (2) Refer to the applicable Hartzell Propeller Overhaul Manual for a list of required consumables when performed outside of overhaul.

C. Special Tooling

- (1) No special tooling is required when performed in conjunction with propeller overhaul.
- (2) Refer to the applicable Hartzell Propeller Overhaul Manual for a list of required tooling when performed outside of overhaul.

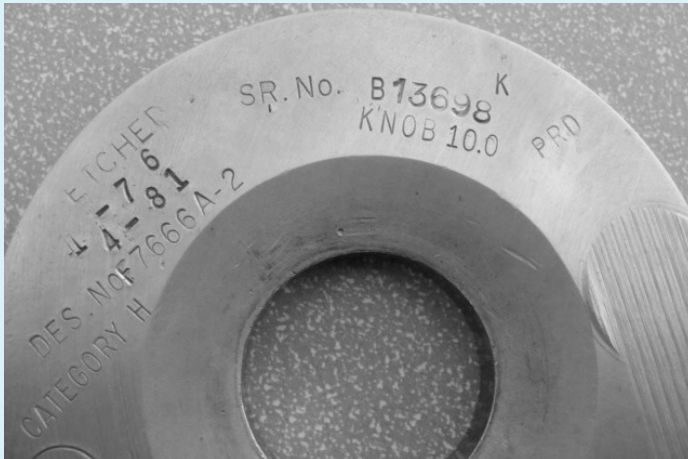
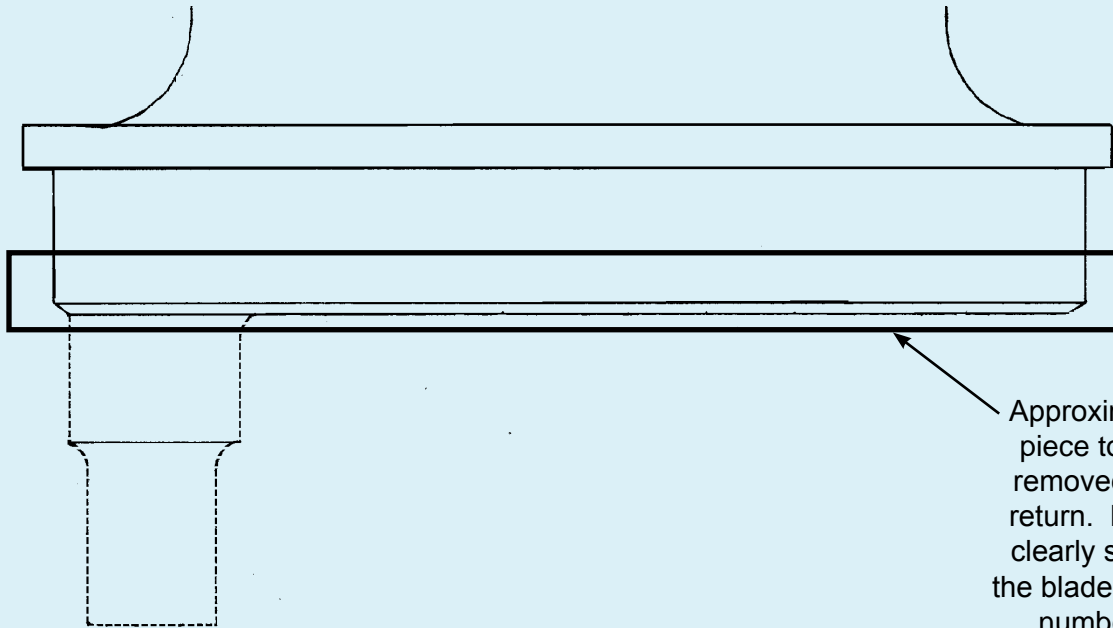
3. Accomplishment Instructions

A. Order replacement blades for all affected blades, allow for manufacturing lead time. Refer to the Appendix in this Alert Service Bulletin for additional details.

- (1) Replacement blades may be procured from other sources.
 - (a) If replacement blades are not ordered from Hartzell Propeller in accordance with the Appendix in this Alert Service Bulletin, a Compliance/Order Form must be completed later as part of these Accomplishment Instructions.
 - (b) Proceed to section 3.B.
- (2) If replacement blades are ordered from Hartzell Propeller in accordance with the Appendix in this Alert Service Bulletin, complete the Compliance/Order Form in the Appendix and send it to Hartzell Product Support at this time.

HARTZELL PROPELLER INC.
ALERT SERVICE BULLETIN
HC-ASB-61-322
Propeller - Blade Replacement

ASB322-Yshank



NOTE: The blade used for the blade piece picture is not an affected serial number, but was used for example purposes only.

Blade Piece for Return to Hartzell Product Support
Figure 1

HARTZELL PROPELLER INC.

ALERT SERVICE BULLETIN

HC-ASB-61-322

Propeller - Blade Replacement

- B. Upon receipt of replacement blades, remove the propeller in accordance with the applicable Hartzell Propeller Owner's Manual.
- C. Disassembly, inspection, and assembly of the propeller and propeller hub must be performed by an appropriately licensed propeller service facility.
- D. Disassemble the propeller in accordance with the applicable Hartzell Propeller Overhaul Manual to remove the affected blade(s).
 - (1) Remove the affected blade(s).

CAUTION: AFFECTED BLADES MUST BE RETIRED FROM SERVICE AND CANNOT BE INSTALLED FOR USE IN ANY APPLICATION, INCLUDING EXPERIMENTAL APPLICATIONS.

- (a) Retire the affected blade(s) from service in accordance with the Part Retirement Procedures chapter in Hartzell Standard Practices Manual 202A (61-01-02), except:

NOTE: The Parts Retirement Form is available at www.hartzellprop.com.

- 1 These retired blades cannot be modified or returned to service for use in any application including experimental applications.
- 2 These retired blades must have the butt of the blade cut off and a piece showing the blade serial number returned to Hartzell Product Support. Refer to Figure 1.
 - a Hartzell Propeller will cover standard shipping for affected blade pieces. Contact Hartzell Product Support for shipping account.
 - b Return Material Authorization is not required.
 - c DO NOT SEND THE WHOLE BLADE.

- E. Assemble the propeller in accordance with the applicable Hartzell Propeller Overhaul Manual to install the replacement blade(s).
 - (1) Install a replacement blade in place of each affected blade.
- F. If a completed Compliance/Order Form from the Appendix in this Alert Service Bulletin was not already sent in section 3.A.(2), complete and send the Compliance/Order Form to Hartzell Product Support.

HARTZELL PROPELLER INC.

ALERT SERVICE BULLETIN

HC-ASB-61-322

Propeller - Blade Replacement

- (1) The form must be sent even if blades are not ordered from Hartzell Propeller.
 - (2) Propellers/blades are not in compliance if a completed Compliance/Order Form is not received by Hartzell Product Support.
- G. Make an entry in the propeller logbook indicating compliance with this Alert Service Bulletin.
- H. Recommended Service Facilities
- (1) Hartzell Propeller has a worldwide network of Recommended Service Facilities that are recommended by Hartzell Propeller for overhaul and repair of our products.
 - (2) Each service facility must meet standard FAA requirements and additional Hartzell Propeller requirements before being recommended by Hartzell Propeller. Each service facility is audited by Hartzell Propeller to verify the continuation of the standards.
 - (3) Hartzell Propeller recommends that you use one of these service facilities when having your propeller overhauled or repaired.
 - (4) For a current list of Hartzell Propeller Recommended Service Facilities, contact Hartzell Product Support or refer to the Hartzell Propeller website at www.hartzellprop.com.
- I. Contact Information and Shipping Address for retired blade portion(s).

Hartzell Propeller Inc.
Attn.: Hartzell Product Support - ASB322
One Propeller Place
Piqua, Ohio 45356-2634 USA
Phone: (001) 937.778.4379
Fax: (001) 937.778.4391
E-mail: techsupport@hartzellprop.com

HARTZELL PROPELLER INC.

ALERT SERVICE BULLETIN

HC-ASB-61-322

Propeller - Blade Replacement

NOTE 1: Table 1-A and Table 1-B contain the same list of blades. Table 1-A is sorted by Blade Model then by Blade S/N. Table 1-B is sorted by Propeller S/N then by Blade S/N.

NOTE 2: Affected blades in a propeller assembly are still affected even if the propeller assembly serial number is not listed in Table 1-A/Table 1-B. The propeller assembly serial numbers that are listed shipped from Hartzell Propeller with one or more affected blades installed. Individual blades may have been installed in any affected model.

<u>Blade Model</u>	<u>Blade S/N</u>	<u>Propeller S/N</u>	<u>Propeller Model</u>
F7282	J37508	DY4469A	HC-C3YR-1RF/F7282
F7282	J37509	unknown	unknown
F7282	J37510	DY4468A	HC-C3YR-1RF/F7282
F7282	J37511	DY4470A	HC-C3YR-1RF/F7282
F7282	J37512	DY4468A	HC-C3YR-1RF/F7282
F7282	J37513	DY4470A	HC-C3YR-1RF/F7282
F7282	J37514	DY4467A	HC-C3YR-1RF/F7282
F7282	J37515	DY4468A	HC-C3YR-1RF/F7282
F7282	J37516	DY4469A	HC-C3YR-1RF/F7282
F7282	J37517	DY4467A	HC-C3YR-1RF/F7282
F7282	J37518	DY4470A	HC-C3YR-1RF/F7282
F7282	J37519	DY4469A	HC-C3YR-1RF/F7282
F7282	J38072	DY4471A	HC-C3YR-1RF/F7282
F7282	J38073	DY4471A	HC-C3YR-1RF/F7282
F7282	J38074	DY4471A	HC-C3YR-1RF/F7282
F7282	J38075	unknown	unknown
F7282	J38076	DY4477A	HC-C3YR-1RF/F7282
F7282	J38077	DY4688B	HC-C3YR-1RF/F7282
F7282	J38078	DY4473A	HC-C3YR-1RF/F7282
F7282	J38079	unknown	unknown
F7282	J38080	DY4473A	HC-C3YR-1RF/F7282
F7282	J38081	DY4477A	HC-C3YR-1RF/F7282
F7282	J38082	DY4473A	HC-C3YR-1RF/F7282
F7282	J38083	DY4477A	HC-C3YR-1RF/F7282
F7282	J38620	DY4478A	HC-C3YR-1RF/F7282
F7282	J38621	DY4480A	HC-C3YR-1RF/F7282
F7282	J38622	DY4478A	HC-C3YR-1RF/F7282
F7282	J38623	DY4479A	HC-C3YR-1RF/F7282

Affected Blade Serial Numbers (Sorted by Blade Model)

Table 1-A

HARTZELL PROPELLER INC.
ALERT SERVICE BULLETIN
HC-ASB-61-322
Propeller - Blade Replacement

<u>Blade Model</u>	<u>Blade S/N</u>	<u>Propeller S/N</u>	<u>Propeller Model</u>
F7282	J38624	DY4480A	HC-C3YR-1RF/F7282
F7282	J38625	DY4479A	HC-C3YR-1RF/F7282
F7282	J38626	DY4479A	HC-C3YR-1RF/F7282
F7282	J38627	DY4478A	HC-C3YR-1RF/F7282
F7282	J38628	DY4480A	HC-C3YR-1RF/F7282
F7392	J37520	FM1213A	HC-E3YR-1RF/F7392
F7392	J37521	FM1213A	HC-E3YR-1RF/F7392
F7392	J37522	FM1215A	HC-E3YR-1RF/F7392
F7392	J37523	FM1215A	HC-E3YR-1RF/F7392
F7392	J37524	FM1214A	HC-E3YR-1RF/F7392
F7392	J37525	FM1214A	HC-E3YR-1RF/F7392
F7392	J37526	FM1213A	HC-E3YR-1RF/F7392
F7392	J37527	FM1215A	HC-E3YR-1RF/F7392
F7392	J37528	FM1214A	HC-E3YR-1RF/F7392
F7392-1	J38629	JC22A	PHC-J3YF-1MF/F7392-1
F7392-1	J38630	JC21A	PHC-J3YF-1MF/F7392-1
F7392-1	J38631	JC22A	PHC-J3YF-1MF/F7392-1
F7392-1	J38632	JC22A	PHC-J3YF-1MF/F7392-1
F7392-1	J38633	JC21A	PHC-J3YF-1MF/F7392-1
F7392-1	J38634	JC20A	PHC-J3YF-1MF/F7392-1
F7392-1	J38635	JC20A	PHC-J3YF-1MF/F7392-1
F7392-1	J38636	JC21A	PHC-J3YF-1MF/F7392-1
F7392-1	J38637	JC20A	PHC-J3YF-1MF/F7392-1
F7663-4	J37529	unknown	unknown
F7663-4	J37530	AX889B	HC-C2YL-1BF/F7663-4
F7663-4	J37531	unknown	unknown
F7663-4	J37532	unknown	unknown
F7663-4	J37533	AX889B	HC-C2YL-1BF/F7663-4
F7663-4	J37534	unknown	unknown
F7663-4	J37535	unknown	unknown
F7663-4	J37536	unknown	unknown
F7663-4	J37537	AX888B	HC-C2YL-1BF/F7663-4
F7663-4	J37538	AX888B	HC-C2YL-1BF/F7663-4
F7663-4	J38638	AX890B	HC-C2YL-1BF/F7663-4

Affected Blade Serial Numbers (Sorted by Blade Model)
Table 1-A, continued

HARTZELL PROPELLER INC.

ALERT SERVICE BULLETIN

HC-ASB-61-322

Propeller - Blade Replacement

<u>Blade Model</u>	<u>Blade S/N</u>	<u>Propeller S/N</u>	<u>Propeller Model</u>
F7663-4	J38639	AX890B	HC-C2YL-1BF/F7663-4
F7663-4	J38640	AX891B	HC-C2YL-1BF/F7663-4
F7663-4	J38641	AX891B	HC-C2YL-1BF/F7663-4
F7663R	J37548	unknown	unknown
F7663R	J37549	DY4466A	HC-C3YR-1RF/F7663R
F7663R	J37550	DY4466A	HC-C3YR-1RF/F7663R
F7663R	J37551	unknown	unknown
F7663R	J37552	unknown	unknown
F7663R	J37553	unknown	unknown
F7663R	J37554	unknown	unknown
F7663R	J37555	unknown	unknown
F7663R	J37556	DY4466A	HC-C3YR-1RF/F7663R
F7663R	J38242	DY4474A	HC-C3YR-1RF/F7663R
F7663R	J38243	DY4475A	HC-C3YR-1RF/F7663R
F7663R	J38244	DY4475A	HC-C3YR-1RF/F7663R
F7663R	J38245	DY4474A	HC-C3YR-1RF/F7663R
F7666A	J37103	CH33881B	HC-C2YR-1BF/F7666A
F7666A	J37104	CH33882B	HC-C2YR-1BF/F7666A
F7666A	J37105	CH33881B	HC-C2YR-1BF/F7666A
F7666A	J37106	CH33882B	HC-C2YR-1BF/F7666A
F7666A	J37980	CH33910B	HC-C2YK-1BF/F7666A
F7666A	J37981	CH33910B	HC-C2YK-1BF/F7666A
F7666A	J37982	unknown	unknown
F7666A	J37983	unknown	unknown
F7666A	J38651	CH33942B	HC-C2YK-1BF/F7666A
F7666A	J38652	CH33946B	HC-C2YK-1BF/F7666A
F7666A	J38653	CH33943B	HC-C2YK-1BF/F7666A
F7666A	J38654	CH33946B	HC-C2YK-1BF/F7666A
F7666A	J38655	CH33943B	HC-C2YK-1BF/F7666A
F7666A	J38656	CH33911B	HC-C2YR-1BF/F7666A
F7666A	J38657	CH33942B	HC-C2YK-1BF/F7666A
F7666A	J38658	CH33911B	HC-C2YR-1BF/F7666A
F7666A	J38659	CH33947B	HC-C2YK-1BF/F7666A
F7666A	J38660	CH33953B	HC-C2YK-1BF/F7666A

Affected Blade Serial Numbers (Sorted by Blade Model)

Table 1-A, continued

HARTZELL PROPELLER INC.

ALERT SERVICE BULLETIN

HC-ASB-61-322

Propeller - Blade Replacement

<u>Blade Model</u>	<u>Blade S/N</u>	<u>Propeller S/N</u>	<u>Propeller Model</u>
F7666A	J38661	CH33941B	HC-C2YK-1BF/F7666A
F7666A	J38662	CH33940B	HC-C2YK-1BF/F7666A
F7666A	J38663	CH33953B	HC-C2YK-1BF/F7666A
F7666A	J38664	CH33940B	HC-C2YK-1BF/F7666A
F7666A	J38665	CH33947B	HC-C2YK-1BF/F7666A
F7666A	J38666	CH33941B	HC-C2YK-1BF/F7666A
F7666A-2	J37557	unknown	unknown
F7666A-2	J37558	unknown	unknown
F7666A-2	J37559	EN963B	HC-M2YR-1BF/F7666A-2
F7666A-2	J37560	EN963B	HC-M2YR-1BF/F7666A-2
F7666A-4	J37561	CH33902B	HC-C2YK-1BF/F7666A-4
F7666A-4	J37562	CH33900B	HC-C2YK-1BF/F7666A-4
F7666A-4	J37563	CH33898B	HC-C2YK-1BF/F7666A-4
F7666A-4	J37564	CH33897B	HC-C2YK-1BF/F7666A-4
F7666A-4	J37565	CH33899B	HC-C2YK-1BF/F7666A-4
F7666A-4	J37566	CH33899B	HC-C2YK-1BF/F7666A-4
F7666A-4	J37567	CH33901B	HC-C2YK-1BF/F7666A-4
F7666A-4	J37568	CH33900B	HC-C2YK-1BF/F7666A-4
F7666A-4	J37569	CH33901B	HC-C2YK-1BF/F7666A-4
F7666A-4	J37570	CH33897B	HC-C2YK-1BF/F7666A-4
F7666A-4	J37571	CH33902B	HC-C2YK-1BF/F7666A-4
F7666A-4	J37572	CH33898B	HC-C2YK-1BF/F7666A-4
F7666A-4	J37573	CH33896B	HC-C2YR-1BF/F7666A-4
F7666A-4	J37574	CH33893B	HC-C2YK-1BF/F7666A-4
F7666A-4	J37575	CH33892B	HC-C2YK-1BF/F7666A-4
F7666A-4	J37576	CH33894B	HC-C2YK-1BF/F7666A-4
F7666A-4	J37577	CH33894B	HC-C2YK-1BF/F7666A-4
F7666A-4	J37578	CH33892B	HC-C2YK-1BF/F7666A-4
F7666A-4	J37579	CH33895B	HC-C2YR-1BF/F7666A-4
F7666A-4	J37580	CH33893B	HC-C2YK-1BF/F7666A-4
F7666A-4	J37581	CH33891B	HC-C2YK-1BF/F7666A-4
F7666A-4	J37582	CH33891B	HC-C2YK-1BF/F7666A-4
F7666A-4	J37583	CH33895B	HC-C2YR-1BF/F7666A-4
F7666A-4	J37584	CH33896B	HC-C2YR-1BF/F7666A-4

Affected Blade Serial Numbers (Sorted by Blade Model)

Table 1-A, continued

HARTZELL PROPELLER INC.

ALERT SERVICE BULLETIN

HC-ASB-61-322

Propeller - Blade Replacement

<u>Blade Model</u>	<u>Blade S/N</u>	<u>Propeller S/N</u>	<u>Propeller Model</u>
F7666A-4	J37984	CH33909B	HC-C2YR-1BF/F7666A-4
F7666A-4	J37985	CH33909B	HC-C2YR-1BF/F7666A-4
F7666A-4	J37986	CH33903B	HC-C2YK-1BF/F7666A-4
F7666A-4	J37987	CH33903B	HC-C2YK-1BF/F7666A-4
F7666A-4	J38488	CH33929B	HC-C2YK-1BF/F7666A-4
F7666A-4	J38489	CH33931B	HC-C2YK-1BF/F7666A-4
F7666A-4	J38490	CH33931B	HC-C2YK-1BF/F7666A-4
F7666A-4	J38491	CH33926B	HC-C2YK-1BF/F7666A-4
F7666A-4	J38492	CH33926B	HC-C2YK-1BF/F7666A-4
F7666A-4	J38493	CH33927B	HC-C2YK-1BF/F7666A-4
F7666A-4	J38494	CH33923B	HC-C2YK-1BF/F7666A-4
F7666A-4	J38495	CH33924B	HC-C2YK-1BF/F7666A-4
F7666A-4	J38496	CH33922B	HC-C2YK-1BF/F7666A-4
F7666A-4	J38497	CH33922B	HC-C2YK-1BF/F7666A-4
F7666A-4	J38498	CH33932B	HC-C2YK-1BF/F7666A-4
F7666A-4	J38499	CH33923B	HC-C2YK-1BF/F7666A-4
F7666A-4	J38500	CH33925B	HC-C2YK-1BF/F7666A-4
F7666A-4	J38501	CH33928B	HC-C2YK-1BF/F7666A-4
F7666A-4	J38502	CH33924B	HC-C2YK-1BF/F7666A-4
F7666A-4	J38503	CH33925B	HC-C2YK-1BF/F7666A-4
F7666A-4	J38504	CH33928B	HC-C2YK-1BF/F7666A-4
F7666A-4	J38505	CH33932B	HC-C2YK-1BF/F7666A-4
F7693F	J37612	DY4472A	HC-C3YR-1RF/F7693F
F7693F	J37613	DY4472A	HC-C3YR-1RF/F7693F
F7693F	J37614	DY4472A	HC-C3YR-1RF/F7693F
F7694	J38673	EF228B	BHC-J2YF-1BF/F7694
F7694	J38675	EF229B	BHC-J2YF-1BF/F7694
F7694	J38676	EF228B	BHC-J2YF-1BF/F7694
F7694	J38677	EF230B	BHC-J2YF-1BF/F7694
F7694-4TX	J38674	unknown	unknown
F7694-4TX	J38678	unknown	unknown
F8465-7R	J37988	unknown	unknown
F8465-7R	J37989	unknown	unknown
F8465-7R	J37990	unknown	unknown

Affected Blade Serial Numbers (Sorted by Blade Model)

Table 1-A, continued

HARTZELL PROPELLER INC.

ALERT SERVICE BULLETIN

HC-ASB-61-322

Propeller - Blade Replacement

<u>Blade Model</u>	<u>Blade S/N</u>	<u>Propeller S/N</u>	<u>Propeller Model</u>
F8465-7R	J37991	unknown	unknown
F8465-7R	J37992	unknown	unknown
F8465-7R	J37993	unknown	unknown
F8465-7R	J37994	unknown	unknown
F8465-7R	J37995	unknown	unknown
F8465-7R	J37996	unknown	unknown
F8465-7R	J37997	unknown	unknown
F8465-7R	J37998	unknown	unknown
F8465-7R	J37999	unknown	unknown
F8465-7R	J38000	unknown	unknown
F8465-7R	J38001	unknown	unknown
F8465-7R	J38002	unknown	unknown
F8465-7R	J38003	unknown	unknown
F8467-7R	J37617	unknown	unknown
F8467-7R	J37618	unknown	unknown
F8468A-2R	J37771	DY4526A	HC-C3YR-1RF/F8468A-2R
F8468A-2R	J37772	DY4526A	HC-C3YR-1RF/F8468A-2R
F8468A-2R	J37773	DY4526A	HC-C3YR-1RF/F8468A-2R
F8468A-6R	J37621	EE3364A	PHC-C3YF-1RF/F8468A-6R
F8468A-6R	J37622	EE3364A	PHC-C3YF-1RF/F8468A-6R
F8468A-6R	J37623	FD309A	PHC-L3YF-1RF/F8468A-6R
F8468A-6R	J37624	FD310A	PHC-L3YF-1RF/F8468A-6R
F8468A-6R	J37625	EE3360A	PHC-C3YF-1RF/F8468A-6R
F8468A-6R	J37626	EE3364A	PHC-C3YF-1RF/F8468A-6R
F8468A-6R	J37627	EE3363A	PHC-C3YF-1RF/F8468A-6R
F8468A-6R	J37628	EE3365A	PHC-C3YF-1RF/F8468A-6R
F8468A-6R	J37629	EE3363A	PHC-C3YF-1RF/F8468A-6R
F8468A-6R	J37630	EE3360A	PHC-C3YF-1RF/F8468A-6R
F8468A-6R	J37631	FD310A	PHC-L3YF-1RF/F8468A-6R
F8468A-6R	J37632	FD310A	PHC-L3YF-1RF/F8468A-6R
F8468A-6R	J37633	FD309A	PHC-L3YF-1RF/F8468A-6R
F8468A-6R	J37634	EE3358A	PHC-C3YF-1RF/F8468A-6R
F8468A-6R	J37635	EE3365A	PHC-C3YF-1RF/F8468A-6R
F8468A-6R	J37636	EE3358A	PHC-C3YF-1RF/F8468A-6R

Affected Blade Serial Numbers (Sorted by Blade Model)
Table 1-A, continued

HARTZELL PROPELLER INC.

ALERT SERVICE BULLETIN

HC-ASB-61-322

Propeller - Blade Replacement

<u>Blade Model</u>	<u>Blade S/N</u>	<u>Propeller S/N</u>	<u>Propeller Model</u>
F8468A-6R	J37637	EE3358A	PHC-C3YF-1RF/F8468A-6R
F8468A-6R	J37638	FD309A	PHC-L3YF-1RF/F8468A-6R
F8468A-6R	J37639	EE3359A	PHC-C3YF-1RF/F8468A-6R
F8468A-6R	J37640	EE3359A	PHC-C3YF-1RF/F8468A-6R
F8468A-6R	J37641	EE3365A	PHC-C3YF-1RF/F8468A-6R
F8468A-6R	J37642	EE3359A	PHC-C3YF-1RF/F8468A-6R
F8468A-6R	J37643	EE3360A	PHC-C3YF-1RF/F8468A-6R
F8468A-6R	J37644	EE3363A	PHC-C3YF-1RF/F8468A-6R
F8468A-6R	J37648	EE3361A	PHC-C3YF-1RF/F8468A-6R
F8468A-6R	J37649	EE3362A	PHC-C3YF-1RF/F8468A-6R
F8468A-6R	J37650	EE3362A	PHC-C3YF-1RF/F8468A-6R
F8468A-6R	J37653	EE3355A	PHC-C3YF-1RF/F8468A-6R
F8468A-6R	J37654	EE3351A	PHC-C3YF-1RF/F8468A-6R
F8468A-6R	J37655	EE3356A	PHC-C3YF-1RF/F8468A-6R
F8468A-6R	J37656	EE3351A	PHC-C3YF-1RF/F8468A-6R
F8468A-6R	J37749	EE3440A	PHC-C3YF-1RF/F8468A-6R
F8468A-6R	J37750	EE3443A	PHC-C3YF-1RF/F8468A-6R
F8468A-6R	J37751	EE3449A	PHC-C3YF-1RF/F8468A-6R
F8468A-6R	J37753	EE3441A	PHC-C3YF-1RF/F8468A-6R
F8468A-6R	J37754	EE3444A	PHC-C3YF-1RF/F8468A-6R
F8468A-6R	J37755	EE3441A	PHC-C3YF-1RF/F8468A-6R
F8468A-6R	J37756	EE3443A	PHC-C3YF-1RF/F8468A-6R
F8468A-6R	J37757	unknown	unknown
F8468A-6R	J37758	EE3443A	PHC-C3YF-1RF/F8468A-6R
F8468A-6R	J37759	EE3366A	PHC-C3YF-1RF/F8468A-6R
F8468A-6R	J37760	EE3366A	PHC-C3YF-1RF/F8468A-6R
F8468A-6R	J37761	EE3369A	PHC-C3YF-1RF/F8468A-6R
F8468A-6R	J37762	EE3368A	PHC-C3YF-1RF/F8468A-6R
F8468A-6R	J37763	EE3369A	PHC-C3YF-1RF/F8468A-6R
F8468A-6R	J37764	EE3369A	PHC-C3YF-1RF/F8468A-6R
F8468A-6R	J37765	EE3367A	PHC-C3YF-1RF/F8468A-6R
F8468A-6R	J37766	EE3366A	PHC-C3YF-1RF/F8468A-6R
F8468A-6R	J37767	EE3368A	PHC-C3YF-1RF/F8468A-6R
F8468A-6R	J37768	EE3367A	PHC-C3YF-1RF/F8468A-6R

Affected Blade Serial Numbers (Sorted by Blade Model)

Table 1-A, continued

HARTZELL PROPELLER INC.

ALERT SERVICE BULLETIN

HC-ASB-61-322

Propeller - Blade Replacement

<u>Blade Model</u>	<u>Blade S/N</u>	<u>Propeller S/N</u>	<u>Propeller Model</u>
F8468A-6R	J37769	EE3367A	PHC-C3YF-1RF/F8468A-6R
F8468A-6R	J37770	EE3368A	PHC-C3YF-1RF/F8468A-6R
F8468A-6R	J38004	EE3373A	PHC-C3YF-1RF/F8468A-6R
F8468A-6R	J38005	EE3370A	PHC-C3YF-1RF/F8468A-6R
F8468A-6R	J38006	EE3373A	PHC-C3YF-1RF/F8468A-6R
F8468A-6R	J38007	EE3374A	PHC-C3YF-1RF/F8468A-6R
F8468A-6R	J38008	EE3370A	PHC-C3YF-1RF/F8468A-6R
F8468A-6R	J38009	EE3374A	PHC-C3YF-1RF/F8468A-6R
F8468A-6R	J38010	EE3374A	PHC-C3YF-1RF/F8468A-6R
F8468A-6R	J38011	EE3370A	PHC-C3YF-1RF/F8468A-6R
F8468A-6R	J38273	EE3376A	PHC-C3YF-1RF/F8468A-6R
F8468A-6R	J38274	EE3379A	PHC-C3YF-1RF/F8468A-6R
F8468A-6R	J38275	EE3377A	PHC-C3YF-1RF/F8468A-6R
F8468A-6R	J38276	EE3379A	PHC-C3YF-1RF/F8468A-6R
F8468A-6R	J38277	EE3376A	PHC-C3YF-1RF/F8468A-6R
F8468A-6R	J38278	EE3376A	PHC-C3YF-1RF/F8468A-6R
F8468A-6R	J38279	EE3377A	PHC-C3YF-1RF/F8468A-6R
F8468A-6R	J38280	EE3379A	PHC-C3YF-1RF/F8468A-6R
F8468A-6R	J38281	EE3378A	PHC-C3YF-1RF/F8468A-6R
F8468A-6R	J38282	EE3378A	PHC-C3YF-1RF/F8468A-6R
F8468A-6R	J38283	EE3378A	PHC-C3YF-1RF/F8468A-6R
F8468A-6R	J38284	EE3377A	PHC-C3YF-1RF/F8468A-6R
F8468A-6R	J38285	EE3385A	PHC-C3YF-1RF/F8468A-6R
F8468A-6R	J38286	EE3385A	PHC-C3YF-1RF/F8468A-6R
F8468A-6R	J38287	EE3388A	PHC-C3YF-1RF/F8468A-6R
F8468A-6R	J38288	EE3384A	PHC-C3YF-1RF/F8468A-6R
F8468A-6R	J38289	EE3385A	PHC-C3YF-1RF/F8468A-6R
F8468A-6R	J38290	EE3388A	PHC-C3YF-1RF/F8468A-6R
F8468A-6R	J38291	EE3386A	PHC-C3YF-1RF/F8468A-6R
F8468A-6R	J38292	EE3387A	PHC-C3YF-1RF/F8468A-6R
F8468A-6R	J38293	EE3387A	PHC-C3YF-1RF/F8468A-6R
F8468A-6R	J38294	EE3388A	PHC-C3YF-1RF/F8468A-6R
F8468A-6R	J38295	EE3384A	PHC-C3YF-1RF/F8468A-6R
F8468A-6R	J38296	EE3384A	PHC-C3YF-1RF/F8468A-6R

Affected Blade Serial Numbers (Sorted by Blade Model)

Table 1-A, continued

HARTZELL PROPELLER INC.

ALERT SERVICE BULLETIN

HC-ASB-61-322

Propeller - Blade Replacement

<u>Blade Model</u>	<u>Blade S/N</u>	<u>Propeller S/N</u>	<u>Propeller Model</u>
F8468A-6R	J38297	EE3386A	PHC-C3YF-1RF/F8468A-6R
F8468A-6R	J38298	EE3413A	PHC-C3YF-1RF/F8468A-6R
F8468A-6R	J38299	EE3389A	PHC-C3YF-1RF/F8468A-6R
F8468A-6R	J38300	EE3390A	PHC-C3YF-1RF/F8468A-6R
F8468A-6R	J38302	EE3386A	PHC-C3YF-1RF/F8468A-6R
F8468A-6R	J38303	EE3389A	PHC-C3YF-1RF/F8468A-6R
F8468A-6R	J38304	EE3387A	PHC-C3YF-1RF/F8468A-6R
F8468A-6R	J38305	EE3413A	PHC-C3YF-1RF/F8468A-6R
F8468A-6R	J38306	EE3389A	PHC-C3YF-1RF/F8468A-6R
F8468A-6R	J38307	EE3390A	PHC-C3YF-1RF/F8468A-6R
F8468A-6R	J38308	EE3390A	PHC-C3YF-1RF/F8468A-6R
F8468A-6R	J38573	EE3396A	PHC-C3YF-1RF/F8468A-6R
F8468A-6R	J38574	EE3391A	PHC-C3YF-1RF/F8468A-6R
F8468A-6R	J38575	EE3391A	PHC-C3YF-1RF/F8468A-6R
F8468A-6R	J38576	EE3396A	PHC-C3YF-1RF/F8468A-6R
F8468A-6R	J38577	EE3397A	PHC-C3YF-1RF/F8468A-6R
F8468A-6R	J38578	EE3397A	PHC-C3YF-1RF/F8468A-6R
F8468A-6R	J38579	EE3392A	PHC-C3YF-1RF/F8468A-6R
F8468A-6R	J38580	EE3397A	PHC-C3YF-1RF/F8468A-6R
F8468A-6R	J38581	EE3392A	PHC-C3YF-1RF/F8468A-6R
F8468A-6R	J38582	EE3392A	PHC-C3YF-1RF/F8468A-6R
F8468A-6R	J38583	EE3391A	PHC-C3YF-1RF/F8468A-6R
F8468A-6R	J38584	EE3396A	PHC-C3YF-1RF/F8468A-6R
F8468A-6R	J38682	FD312A	PHC-L3YF-1RF/F8468A-6R
F8468A-6R	J38683	EE3399A	PHC-C3YF-1RF/F8468A-6R
F8468A-6R	J38684	EE3398A	PHC-C3YF-1RF/F8468A-6R
F8468A-6R	J38685	FD311A	PHC-L3YF-1RF/F8468A-6R
F8468A-6R	J38686	FD312A	PHC-L3YF-1RF/F8468A-6R
F8468A-6R	J38687	FD311A	PHC-L3YF-1RF/F8468A-6R
F8468A-6R	J38688	EE3399A	PHC-C3YF-1RF/F8468A-6R
F8468A-6R	J38689	FD311A	PHC-L3YF-1RF/F8468A-6R
F8468A-6R	J38690	FD312A	PHC-L3YF-1RF/F8468A-6R
F8468A-6R	J38691	EE3399A	PHC-C3YF-1RF/F8468A-6R
F8468A-6R	J38692	EE3398A	PHC-C3YF-1RF/F8468A-6R

Affected Blade Serial Numbers (Sorted by Blade Model)

Table 1-A, continued

HARTZELL PROPELLER INC.

ALERT SERVICE BULLETIN

HC-ASB-61-322

Propeller - Blade Replacement

<u>Blade Model</u>	<u>Blade S/N</u>	<u>Propeller S/N</u>	<u>Propeller Model</u>
F8468A-6R	J38693	EE3398A	PHC-C3YF-1RF/F8468A-6R
F8468A-8R	J37657	EE3375A	PHC-C3YF-1RF/F8468A-8R
F8468A-8R	J37658	EE3375A	PHC-C3YF-1RF/F8468A-8R
F8468A-8R	J37659	EE3375A	PHC-C3YF-1RF/F8468A-8R
F8468A-8R	J38309	EC1652A	HC-C3YF-1RF/F8468A-8R
F8468A-8R	J38310	EC1652A	HC-C3YF-1RF/F8468A-8R
F8468A-8R	J38311	EC1652A	HC-C3YF-1RF/F8468A-8R
F8468A-8R	J38312	EE3383A	PHC-C3YF-1RF/F8468A-8R
F8468A-8R	J38313	EE3383A	PHC-C3YF-1RF/F8468A-8R
F8468A-8R	J38314	EE3383A	PHC-C3YF-1RF/F8468A-8R
F8468AR	J37176	EG89B	BHC-L2YF-1BF/F8468AR
F8468AR	J38694	EG90B	BHC-L2YF-1BF/F8468AR
F8468AR	J38695	EG90B	BHC-L2YF-1BF/F8468AR
F8475R	J37660	unknown	unknown
F8475R	J37661	unknown	unknown
F8475R	J37662	unknown	unknown
F8475R	J37663	unknown	unknown
F8475R	J37664	unknown	unknown
F8475R	J37665	unknown	unknown
F8475R	J37666	unknown	unknown
F8475R	J37667	unknown	unknown
F8475R	J37668	unknown	unknown
F8475R	J37669	unknown	unknown
F8475R	J37670	unknown	unknown
F8475R	J37671	unknown	unknown
F8475R	J38679	CH34036B	HC-C2YR-1BF/F8475R
F8475R	J38680	CH34036B	HC-C2YR-1BF/F8475R
F8475R	J38681	unknown	unknown
F8477-4	J38506	CH33916B	HC-C2YK-1BF/F8477-4
F8477-4	J38507	CH33914B	HC-C2YK-1BF/F8477-4
F8477-4	J38508	CH33916B	HC-C2YK-1BF/F8477-4
F8477-4	J38509	CH33915B	HC-C2YK-1BF/F8477-4
F8477-4	J38510	CH33913B	HC-C2YK-1BF/F8477-4
F8477-4	J38511	CH33915B	HC-C2YK-1BF/F8477-4

Affected Blade Serial Numbers (Sorted by Blade Model)

Table 1-A, continued

HARTZELL PROPELLER INC.

ALERT SERVICE BULLETIN

HC-ASB-61-322

Propeller - Blade Replacement

<u>Blade Model</u>	<u>Blade S/N</u>	<u>Propeller S/N</u>	<u>Propeller Model</u>
F8477-4	J38512	CH33912B	HC-C2YK-1BF/F8477-4
F8477-4	J38513	CH33912B	HC-C2YK-1BF/F8477-4
F8477-4	J38514	CH33913B	HC-C2YK-1BF/F8477-4
F8477-4	J38515	CH33914B	HC-C2YK-1BF/F8477-4
FC7479-2R	J38784	unknown	unknown
FC7479-2R	J38790	unknown	unknown
FC7663-2R	J37858	ED4162A	PHC-J3YF-2UF/FC7663-2R
FC7663-2R	J37859	ED4163A	PHC-J3YF-2UF/FC7663-2R
FC7663-2R	J37860	ED4163A	PHC-J3YF-2UF/FC7663-2R
FC7663-2R	J37861	ED4265B	PHC-J3YF-2UF/FC7663-2R
FC7663-2R	J37862	ED4163A	PHC-J3YF-2UF/FC7663-2R
FC7663-2R	J37863	ED4162A	PHC-J3YF-2UF/FC7663-2R
FC7663-2R	J37865	ED4161A	PHC-J3YF-2UF/FC7663-2R
FC7663-2R	J37866	ED4164A	PHC-J3YF-2UF/FC7663-2R
FC7663-2R	J37867	ED4161A	PHC-J3YF-2UF/FC7663-2R
FC7663-2R	J37868	ED4162A	PHC-J3YF-2UF/FC7663-2R
FC7663-2R	J37869	ED4164A	PHC-J3YF-2UF/FC7663-2R
FC7663-2R	J38160	ED4164A	PHC-J3YF-2UF/FC7663-2R
FC7663-2R	J38177	ED4165A	PHC-J3YF-2UF/FC7663-2R
FC7663-2R	J38178	ED4168A	PHC-J3YF-2UF/FC7663-2R
FC7663-2R	J38179	ED4166A	PHC-J3YF-2UF/FC7663-2R
FC7663-2R	J38180	ED4165A	PHC-J3YF-2UF/FC7663-2R
FC7663-2R	J38181	ED4166A	PHC-J3YF-2UF/FC7663-2R
FC7663-2R	J38182	ED4168A	PHC-J3YF-2UF/FC7663-2R
FC7663-2R	J38183	ED4167A	PHC-J3YF-2UF/FC7663-2R
FC7663-2R	J38184	ED4167A	PHC-J3YF-2UF/FC7663-2R
FC7663-2R	J38185	ED4167A	PHC-J3YF-2UF/FC7663-2R
FC7663-2R	J38186	ED4166A	PHC-J3YF-2UF/FC7663-2R
FC7663-2R	J38187	ED4168A	PHC-J3YF-2UF/FC7663-2R
FC7663-2R	J38188	ED4165A	PHC-J3YF-2UF/FC7663-2R
FC7663-2R	J38330	ED4161A	PHC-J3YF-2UF/FC7663-2R
FC7663-2R	J44694	ED4261B	PHC-J3YF-2UF/FC7663-2R
FC7663-4	J38189	AY315B	HC-C2YL-2CUF/FC7663-4
FC7663-4	J38190	AY314B	HC-C2YL-2CUF/FC7663-4

Affected Blade Serial Numbers (Sorted by Blade Model)

Table 1-A, continued

HARTZELL PROPELLER INC.

ALERT SERVICE BULLETIN

HC-ASB-61-322

Propeller - Blade Replacement

<u>Blade Model</u>	<u>Blade S/N</u>	<u>Propeller S/N</u>	<u>Propeller Model</u>
FC7663-4	J38191	AY312B	HC-C2YL-2CUF/FC7663-4
FC7663-4	J38192	AY313B	HC-C2YL-2CUF/FC7663-4
FC7663-4	J38193	AY313B	HC-C2YL-2CUF/FC7663-4
FC7663-4	J38194	AY316B	HC-C2YL-2CUF/FC7663-4
FC7663-4	J38195	AY312B	HC-C2YL-2CUF/FC7663-4
FC7663-4	J38196	AY316B	HC-C2YL-2CUF/FC7663-4
FC7663-4	J38197	AY315B	HC-C2YL-2CUF/FC7663-4
FC7663-4	J38198	AY314B	HC-C2YL-2CUF/FC7663-4
FC7663B-2R	J37962	EB4882A	PHC-C3YF-2UF/FC7663B-2R
FC7663B-2R	J37963	EB4881A	PHC-C3YF-2UF/FC7663B-2R
FC7663B-2R	J37964	EB4881A	PHC-C3YF-2UF/FC7663B-2R
FC7663B-2R	J37965	EB4882A	PHC-C3YF-2UF/FC7663B-2R
FC7663B-2R	J37966	EB4882A	PHC-C3YF-2UF/FC7663B-2R
FC7663B-2R	J37967	ED4169A	PHC-J3YF-2UF/FC7663B-2R
FC7663B-2R	J37968	EB4881A	PHC-C3YF-2UF/FC7663B-2R
FC7663B-2R	J37969	ED4169A	PHC-J3YF-2UF/FC7663B-2R
FC7663B-2R	J37970	ED4169A	PHC-J3YF-2UF/FC7663B-2R
FC7663B-2R	J37971	EB4883A	PHC-C3YF-2UF/FC7663B-2R
FC7663B-2R	J37972	unknown	unknown
FC7663B-2R	J37973	EB4883A	PHC-C3YF-2UF/FC7663B-2R
FC7663B-2R	J37974	EB4902A	PHC-C3YF-2UF/FC7663B-2R
FC7663B-2R	J37975	EB4884A	PHC-C3YF-2UF/FC7663B-2R
FC7663B-2R	J37976	EB4902A	PHC-C3YF-2UF/FC7663B-2R
FC7663B-2R	J37977	EB4883A	PHC-C3YF-2UF/FC7663B-2R
FC7663B-2R	J37978	EB4884A	PHC-C3YF-2UF/FC7663B-2R
FC7663B-2R	J37979	EB4884A	PHC-C3YF-2UF/FC7663B-2R
FC7666A	J37473	FB1193B	HC-M2YR-2CEUF/FC7666A
FC7666A	J37474	unknown	unknown
FC7666A	J37475	unknown	unknown
FC7666A	J37476	unknown	unknown
FC7666A	J37477	unknown	unknown
FC7666A	J37478	FB1193B	HC-M2YR-2CEUF/FC7666A
FC7666A-2	J38202	DN5244B	HC-C2YK-4CF/FC7666A-2
FC7666A-2	J38203	DN5243B	HC-C2YK-4CF/FC7666A-2

Affected Blade Serial Numbers (Sorted by Blade Model)

Table 1-A, continued

HARTZELL PROPELLER INC.

ALERT SERVICE BULLETIN

HC-ASB-61-322

Propeller - Blade Replacement

<u>Blade Model</u>	<u>Blade S/N</u>	<u>Propeller S/N</u>	<u>Propeller Model</u>
FC7666A-2	J38204	unknown	unknown
FC7666A-2	J38205	DN5244B	HC-C2YK-4CF/FC7666A-2
FC7666A-2	J38206	unknown	unknown
FC7666A-2	J38207	DN5243B	HC-C2YK-4CF/FC7666A-2
FC7666A-2	J38208	DN5241B	HC-C2YR-4CF/FC7666A-2
FC7666A-2	J38209	DN5242B	HC-C2YR-4CF/FC7666A-2
FC7666A-2	J38210	DN5245B	HC-C2YR-4CF/FC7666A-2
FC7666A-2	J38211	DN5242B	HC-C2YR-4CF/FC7666A-2
FC7666A-2	J38212	DN5241B	HC-C2YR-4CF/FC7666A-2
FC7666A-2	J38213	DN5245B	HC-C2YR-4CF/FC7666A-2
FC8459-8R	J37878	unknown	unknown
FC8459-8R	J37879	unknown	unknown
FC8459-8R	J37880	unknown	unknown
FC8459-8R	J37881	unknown	unknown
FC8459-8R	J37882	unknown	unknown
FC8459-8R	J37883	unknown	unknown
FC8459-8R	J37884	unknown	unknown
FC8459-8R	J37885	unknown	unknown
FC8459-8R	J37886	unknown	unknown
FC8459-8R	J37887	unknown	unknown
FC8459-8R	J37888	unknown	unknown
FC8459-8R	J37889	unknown	unknown
FC8468-3	J38218	AN7312B	HC-C2YF-2CUF/FC8468-3
FC8468-3	J38219	AN7311B	HC-C2YF-2CUF/FC8468-3
FC8468-3	J38220	AN7313B	HC-C2YF-2CUF/FC8468-3
FC8468-3	J38221	AN7312B	HC-C2YF-2CUF/FC8468-3
FC8468-3	J38222	AN7310B	HC-C2YF-2CUF/FC8468-3
FC8468-3	J38223	AN7313B	HC-C2YF-2CUF/FC8468-3
FC8468-3	J38224	AN7311B	HC-C2YF-2CUF/FC8468-3
FC8468-3	J38225	AN7310B	HC-C2YF-2CUF/FC8468-3
FC8468-6R	J37890	unknown	unknown
FC8468-6R	J37891	unknown	unknown
FC8468-6R	J37892	unknown	unknown
FC8468-6R	J37893	unknown	unknown

Affected Blade Serial Numbers (Sorted by Blade Model)

Table 1-A, continued

HARTZELL PROPELLER INC.

ALERT SERVICE BULLETIN

HC-ASB-61-322

Propeller - Blade Replacement

<u>Blade Model</u>	<u>Blade S/N</u>	<u>Propeller S/N</u>	<u>Propeller Model</u>
FC8468-6R	J37894	unknown	unknown
FC8468-6R	J37895	unknown	unknown
FC8468-6R	J37896	CK4776A	HC-C3YR-2UF/FC8468-6R
FC8468-6R	J37897	CK4773A	HC-C3YR-2UF/FC8468-6R
FC8468-6R	J37898	CK4775A	HC-C3YR-2UF/FC8468-6R
FC8468-6R	J37899	CK4776A	HC-C3YR-2UF/FC8468-6R
FC8468-6R	J37900	CK4774A	HC-C3YR-2UF/FC8468-6R
FC8468-6R	J37901	CK4773A	HC-C3YR-2UF/FC8468-6R
FC8468-6R	J37902	CK4774A	HC-C3YR-2UF/FC8468-6R
FC8468-6R	J37903	CK4775A	HC-C3YR-2UF/FC8468-6R
FC8468-6R	J37904	CK4774A	HC-C3YR-2UF/FC8468-6R
FC8468-6R	J37905	CK4773A	HC-C3YR-2UF/FC8468-6R
FC8468-6R	J37906	CK4775A	HC-C3YR-2UF/FC8468-6R
FC8468-6R	J37907	CK4776A	HC-C3YR-2UF/FC8468-6R
FC8477A-4	J37908	unknown	unknown
FC8477A-4	J37909	unknown	unknown

Affected Blade Serial Numbers (Sorted by Blade Model)

Table 1-A, continued

HARTZELL PROPELLER INC.

ALERT SERVICE BULLETIN

HC-ASB-61-322

Propeller - Blade Replacement

NOTE 1: Table 1-A and Table 1-B contain the same list of blades. Table 1-A is sorted by Blade Model then by Blade S/N. Table 1-B is sorted by Propeller S/N then by Blade S/N.

NOTE 2: Affected blades in a propeller assembly are still affected even if the propeller assembly serial number is not listed in Table 1-A/Table 1-B. The propeller assembly serial numbers that are listed shipped from Hartzell Propeller with one or more affected blades installed. Individual blades may have been installed in any affected model.

Propeller S/N	Blade S/N	Blade Model	Propeller Model
AN7310B	J38222	FC8468-3	HC-C2YF-2CUF/FC8468-3
AN7310B	J38225	FC8468-3	HC-C2YF-2CUF/FC8468-3
AN7311B	J38219	FC8468-3	HC-C2YF-2CUF/FC8468-3
AN7311B	J38224	FC8468-3	HC-C2YF-2CUF/FC8468-3
AN7312B	J38218	FC8468-3	HC-C2YF-2CUF/FC8468-3
AN7312B	J38221	FC8468-3	HC-C2YF-2CUF/FC8468-3
AN7313B	J38220	FC8468-3	HC-C2YF-2CUF/FC8468-3
AN7313B	J38223	FC8468-3	HC-C2YF-2CUF/FC8468-3
AX888B	J37537	F7663-4	HC-C2YL-1BF/F7663-4
AX888B	J37538	F7663-4	HC-C2YL-1BF/F7663-4
AX889B	J37530	F7663-4	HC-C2YL-1BF/F7663-4
AX889B	J37533	F7663-4	HC-C2YL-1BF/F7663-4
AX890B	J38638	F7663-4	HC-C2YL-1BF/F7663-4
AX890B	J38639	F7663-4	HC-C2YL-1BF/F7663-4
AX891B	J38640	F7663-4	HC-C2YL-1BF/F7663-4
AX891B	J38641	F7663-4	HC-C2YL-1BF/F7663-4
AY312B	J38191	FC7663-4	HC-C2YL-2CUF/FC7663-4
AY312B	J38195	FC7663-4	HC-C2YL-2CUF/FC7663-4
AY313B	J38192	FC7663-4	HC-C2YL-2CUF/FC7663-4
AY313B	J38193	FC7663-4	HC-C2YL-2CUF/FC7663-4
AY314B	J38190	FC7663-4	HC-C2YL-2CUF/FC7663-4
AY314B	J38198	FC7663-4	HC-C2YL-2CUF/FC7663-4
AY315B	J38189	FC7663-4	HC-C2YL-2CUF/FC7663-4
AY315B	J38197	FC7663-4	HC-C2YL-2CUF/FC7663-4
AY316B	J38194	FC7663-4	HC-C2YL-2CUF/FC7663-4
AY316B	J38196	FC7663-4	HC-C2YL-2CUF/FC7663-4
CH33881B	J37103	F7666A	HC-C2YR-1BF/F7666A
CH33881B	J37105	F7666A	HC-C2YR-1BF/F7666A

Affected Blade Serial Numbers (Sorted by Propeller S/N)

Table 1-B

HARTZELL PROPELLER INC.

ALERT SERVICE BULLETIN

HC-ASB-61-322

Propeller - Blade Replacement

<u>Propeller S/N</u>	<u>Blade S/N</u>	<u>Blade Model</u>	<u>Propeller Model</u>
CH33882B	J37104	F7666A	HC-C2YR-1BF/F7666A
CH33882B	J37106	F7666A	HC-C2YR-1BF/F7666A
CH33891B	J37581	F7666A-4	HC-C2YK-1BF/F7666A-4
CH33891B	J37582	F7666A-4	HC-C2YK-1BF/F7666A-4
CH33892B	J37575	F7666A-4	HC-C2YK-1BF/F7666A-4
CH33892B	J37578	F7666A-4	HC-C2YK-1BF/F7666A-4
CH33893B	J37574	F7666A-4	HC-C2YK-1BF/F7666A-4
CH33893B	J37580	F7666A-4	HC-C2YK-1BF/F7666A-4
CH33894B	J37576	F7666A-4	HC-C2YK-1BF/F7666A-4
CH33894B	J37577	F7666A-4	HC-C2YK-1BF/F7666A-4
CH33895B	J37579	F7666A-4	HC-C2YR-1BF/F7666A-4
CH33895B	J37583	F7666A-4	HC-C2YR-1BF/F7666A-4
CH33896B	J37573	F7666A-4	HC-C2YR-1BF/F7666A-4
CH33896B	J37584	F7666A-4	HC-C2YR-1BF/F7666A-4
CH33897B	J37564	F7666A-4	HC-C2YK-1BF/F7666A-4
CH33897B	J37570	F7666A-4	HC-C2YK-1BF/F7666A-4
CH33898B	J37563	F7666A-4	HC-C2YK-1BF/F7666A-4
CH33898B	J37572	F7666A-4	HC-C2YK-1BF/F7666A-4
CH33899B	J37565	F7666A-4	HC-C2YK-1BF/F7666A-4
CH33899B	J37566	F7666A-4	HC-C2YK-1BF/F7666A-4
CH33900B	J37562	F7666A-4	HC-C2YK-1BF/F7666A-4
CH33900B	J37568	F7666A-4	HC-C2YK-1BF/F7666A-4
CH33901B	J37567	F7666A-4	HC-C2YK-1BF/F7666A-4
CH33901B	J37569	F7666A-4	HC-C2YK-1BF/F7666A-4
CH33902B	J37561	F7666A-4	HC-C2YK-1BF/F7666A-4
CH33902B	J37571	F7666A-4	HC-C2YK-1BF/F7666A-4
CH33903B	J37986	F7666A-4	HC-C2YK-1BF/F7666A-4
CH33903B	J37987	F7666A-4	HC-C2YK-1BF/F7666A-4
CH33909B	J37984	F7666A-4	HC-C2YR-1BF/F7666A-4
CH33909B	J37985	F7666A-4	HC-C2YR-1BF/F7666A-4
CH33910B	J37980	F7666A	HC-C2YK-1BF/F7666A
CH33910B	J37981	F7666A	HC-C2YK-1BF/F7666A
CH33911B	J38656	F7666A	HC-C2YR-1BF/F7666A
CH33911B	J38658	F7666A	HC-C2YR-1BF/F7666A

Affected Blade Serial Numbers (Sorted by Propeller S/N)

Table 1-B, continued

HARTZELL PROPELLER INC.

ALERT SERVICE BULLETIN

HC-ASB-61-322

Propeller - Blade Replacement

<u>Propeller S/N</u>	<u>Blade S/N</u>	<u>Blade Model</u>	<u>Propeller Model</u>
CH33912B	J38512	F8477-4	HC-C2YK-1BF/F8477-4
CH33912B	J38513	F8477-4	HC-C2YK-1BF/F8477-4
CH33913B	J38510	F8477-4	HC-C2YK-1BF/F8477-4
CH33913B	J38514	F8477-4	HC-C2YK-1BF/F8477-4
CH33914B	J38507	F8477-4	HC-C2YK-1BF/F8477-4
CH33914B	J38515	F8477-4	HC-C2YK-1BF/F8477-4
CH33915B	J38509	F8477-4	HC-C2YK-1BF/F8477-4
CH33915B	J38511	F8477-4	HC-C2YK-1BF/F8477-4
CH33916B	J38506	F8477-4	HC-C2YK-1BF/F8477-4
CH33916B	J38508	F8477-4	HC-C2YK-1BF/F8477-4
CH33922B	J38496	F7666A-4	HC-C2YK-1BF/F7666A-4
CH33922B	J38497	F7666A-4	HC-C2YK-1BF/F7666A-4
CH33923B	J38494	F7666A-4	HC-C2YK-1BF/F7666A-4
CH33923B	J38499	F7666A-4	HC-C2YK-1BF/F7666A-4
CH33924B	J38495	F7666A-4	HC-C2YK-1BF/F7666A-4
CH33924B	J38502	F7666A-4	HC-C2YK-1BF/F7666A-4
CH33925B	J38500	F7666A-4	HC-C2YK-1BF/F7666A-4
CH33925B	J38503	F7666A-4	HC-C2YK-1BF/F7666A-4
CH33926B	J38491	F7666A-4	HC-C2YK-1BF/F7666A-4
CH33926B	J38492	F7666A-4	HC-C2YK-1BF/F7666A-4
CH33927B	J38493	F7666A-4	HC-C2YK-1BF/F7666A-4
CH33928B	J38501	F7666A-4	HC-C2YK-1BF/F7666A-4
CH33928B	J38504	F7666A-4	HC-C2YK-1BF/F7666A-4
CH33929B	J38488	F7666A-4	HC-C2YK-1BF/F7666A-4
CH33931B	J38489	F7666A-4	HC-C2YK-1BF/F7666A-4
CH33931B	J38490	F7666A-4	HC-C2YK-1BF/F7666A-4
CH33932B	J38498	F7666A-4	HC-C2YK-1BF/F7666A-4
CH33932B	J38505	F7666A-4	HC-C2YK-1BF/F7666A-4
CH33940B	J38662	F7666A	HC-C2YK-1BF/F7666A
CH33940B	J38664	F7666A	HC-C2YK-1BF/F7666A
CH33941B	J38661	F7666A	HC-C2YK-1BF/F7666A
CH33941B	J38666	F7666A	HC-C2YK-1BF/F7666A
CH33942B	J38651	F7666A	HC-C2YK-1BF/F7666A
CH33942B	J38657	F7666A	HC-C2YK-1BF/F7666A

Affected Blade Serial Numbers (Sorted by Propeller S/N)

Table 1-B, continued

HARTZELL PROPELLER INC.

ALERT SERVICE BULLETIN

HC-ASB-61-322

Propeller - Blade Replacement

<u>Propeller S/N</u>	<u>Blade S/N</u>	<u>Blade Model</u>	<u>Propeller Model</u>
CH33943B	J38653	F7666A	HC-C2YK-1BF/F7666A
CH33943B	J38655	F7666A	HC-C2YK-1BF/F7666A
CH33946B	J38652	F7666A	HC-C2YK-1BF/F7666A
CH33946B	J38654	F7666A	HC-C2YK-1BF/F7666A
CH33947B	J38659	F7666A	HC-C2YK-1BF/F7666A
CH33947B	J38665	F7666A	HC-C2YK-1BF/F7666A
CH33953B	J38660	F7666A	HC-C2YK-1BF/F7666A
CH33953B	J38663	F7666A	HC-C2YK-1BF/F7666A
CH34036B	J38679	F8475R	HC-C2YR-1BF/F8475R
CH34036B	J38680	F8475R	HC-C2YR-1BF/F8475R
CK4773A	J37897	FC8468-6R	HC-C3YR-2UF/FC8468-6R
CK4773A	J37901	FC8468-6R	HC-C3YR-2UF/FC8468-6R
CK4773A	J37905	FC8468-6R	HC-C3YR-2UF/FC8468-6R
CK4774A	J37900	FC8468-6R	HC-C3YR-2UF/FC8468-6R
CK4774A	J37902	FC8468-6R	HC-C3YR-2UF/FC8468-6R
CK4774A	J37904	FC8468-6R	HC-C3YR-2UF/FC8468-6R
CK4775A	J37898	FC8468-6R	HC-C3YR-2UF/FC8468-6R
CK4775A	J37903	FC8468-6R	HC-C3YR-2UF/FC8468-6R
CK4775A	J37906	FC8468-6R	HC-C3YR-2UF/FC8468-6R
CK4776A	J37896	FC8468-6R	HC-C3YR-2UF/FC8468-6R
CK4776A	J37899	FC8468-6R	HC-C3YR-2UF/FC8468-6R
CK4776A	J37907	FC8468-6R	HC-C3YR-2UF/FC8468-6R
DN5241B	J38208	FC7666A-2	HC-C2YR-4CF/FC7666A-2
DN5241B	J38212	FC7666A-2	HC-C2YR-4CF/FC7666A-2
DN5242B	J38209	FC7666A-2	HC-C2YR-4CF/FC7666A-2
DN5242B	J38211	FC7666A-2	HC-C2YR-4CF/FC7666A-2
DN5243B	J38203	FC7666A-2	HC-C2YK-4CF/FC7666A-2
DN5243B	J38207	FC7666A-2	HC-C2YK-4CF/FC7666A-2
DN5244B	J38202	FC7666A-2	HC-C2YK-4CF/FC7666A-2
DN5244B	J38205	FC7666A-2	HC-C2YK-4CF/FC7666A-2
DN5245B	J38210	FC7666A-2	HC-C2YR-4CF/FC7666A-2
DN5245B	J38213	FC7666A-2	HC-C2YR-4CF/FC7666A-2
DY4466A	J37549	F7663R	HC-C3YR-1RF/F7663R
DY4466A	J37550	F7663R	HC-C3YR-1RF/F7663R

Affected Blade Serial Numbers (Sorted by Propeller S/N)

Table 1-B, continued

HARTZELL PROPELLER INC.

ALERT SERVICE BULLETIN

HC-ASB-61-322

Propeller - Blade Replacement

<u>Propeller S/N</u>	<u>Blade S/N</u>	<u>Blade Model</u>	<u>Propeller Model</u>
DY4466A	J37556	F7663R	HC-C3YR-1RF/F7663R
DY4467A	J37514	F7282	HC-C3YR-1RF/F7282
DY4467A	J37517	F7282	HC-C3YR-1RF/F7282
DY4468A	J37510	F7282	HC-C3YR-1RF/F7282
DY4468A	J37512	F7282	HC-C3YR-1RF/F7282
DY4468A	J37515	F7282	HC-C3YR-1RF/F7282
DY4469A	J37508	F7282	HC-C3YR-1RF/F7282
DY4469A	J37516	F7282	HC-C3YR-1RF/F7282
DY4469A	J37519	F7282	HC-C3YR-1RF/F7282
DY4470A	J37511	F7282	HC-C3YR-1RF/F7282
DY4470A	J37513	F7282	HC-C3YR-1RF/F7282
DY4470A	J37518	F7282	HC-C3YR-1RF/F7282
DY4471A	J38072	F7282	HC-C3YR-1RF/F7282
DY4471A	J38073	F7282	HC-C3YR-1RF/F7282
DY4471A	J38074	F7282	HC-C3YR-1RF/F7282
DY4472A	J37612	F7693F	HC-C3YR-1RF/F7693F
DY4472A	J37613	F7693F	HC-C3YR-1RF/F7693F
DY4472A	J37614	F7693F	HC-C3YR-1RF/F7693F
DY4473A	J38078	F7282	HC-C3YR-1RF/F7282
DY4473A	J38080	F7282	HC-C3YR-1RF/F7282
DY4473A	J38082	F7282	HC-C3YR-1RF/F7282
DY4474A	J38242	F7663R	HC-C3YR-1RF/F7663R
DY4474A	J38245	F7663R	HC-C3YR-1RF/F7663R
DY4475A	J38243	F7663R	HC-C3YR-1RF/F7663R
DY4475A	J38244	F7663R	HC-C3YR-1RF/F7663R
DY4477A	J38076	F7282	HC-C3YR-1RF/F7282
DY4477A	J38081	F7282	HC-C3YR-1RF/F7282
DY4477A	J38083	F7282	HC-C3YR-1RF/F7282
DY4478A	J38620	F7282	HC-C3YR-1RF/F7282
DY4478A	J38622	F7282	HC-C3YR-1RF/F7282
DY4478A	J38627	F7282	HC-C3YR-1RF/F7282
DY4479A	J38623	F7282	HC-C3YR-1RF/F7282
DY4479A	J38625	F7282	HC-C3YR-1RF/F7282
DY4479A	J38626	F7282	HC-C3YR-1RF/F7282

Affected Blade Serial Numbers (Sorted by Propeller S/N)

Table 1-B, continued

HARTZELL PROPELLER INC.

ALERT SERVICE BULLETIN

HC-ASB-61-322

Propeller - Blade Replacement

<u>Propeller S/N</u>	<u>Blade S/N</u>	<u>Blade Model</u>	<u>Propeller Model</u>
DY4480A	J38621	F7282	HC-C3YR-1RF/F7282
DY4480A	J38624	F7282	HC-C3YR-1RF/F7282
DY4480A	J38628	F7282	HC-C3YR-1RF/F7282
DY4526A	J37771	F8468A-2R	HC-C3YR-1RF/F8468A-2R
DY4526A	J37772	F8468A-2R	HC-C3YR-1RF/F8468A-2R
DY4526A	J37773	F8468A-2R	HC-C3YR-1RF/F8468A-2R
DY4688B	J38077	F7282	HC-C3YR-1RF/F7282
EB4881A	J37963	FC7663B-2R	PHC-C3YF-2UF/FC7663B-2R
EB4881A	J37964	FC7663B-2R	PHC-C3YF-2UF/FC7663B-2R
EB4881A	J37968	FC7663B-2R	PHC-C3YF-2UF/FC7663B-2R
EB4882A	J37962	FC7663B-2R	PHC-C3YF-2UF/FC7663B-2R
EB4882A	J37965	FC7663B-2R	PHC-C3YF-2UF/FC7663B-2R
EB4882A	J37966	FC7663B-2R	PHC-C3YF-2UF/FC7663B-2R
EB4883A	J37971	FC7663B-2R	PHC-C3YF-2UF/FC7663B-2R
EB4883A	J37973	FC7663B-2R	PHC-C3YF-2UF/FC7663B-2R
EB4883A	J37977	FC7663B-2R	PHC-C3YF-2UF/FC7663B-2R
EB4884A	J37975	FC7663B-2R	PHC-C3YF-2UF/FC7663B-2R
EB4884A	J37978	FC7663B-2R	PHC-C3YF-2UF/FC7663B-2R
EB4884A	J37979	FC7663B-2R	PHC-C3YF-2UF/FC7663B-2R
EB4902A	J37974	FC7663B-2R	PHC-C3YF-2UF/FC7663B-2R
EB4902A	J37976	FC7663B-2R	PHC-C3YF-2UF/FC7663B-2R
EC1652A	J38309	F8468A-8R	HC-C3YF-1RF/F8468A-8R
EC1652A	J38310	F8468A-8R	HC-C3YF-1RF/F8468A-8R
EC1652A	J38311	F8468A-8R	HC-C3YF-1RF/F8468A-8R
ED4161A	J37865	FC7663-2R	PHC-J3YF-2UF/FC7663-2R
ED4161A	J37867	FC7663-2R	PHC-J3YF-2UF/FC7663-2R
ED4161A	J38330	FC7663-2R	PHC-J3YF-2UF/FC7663-2R
ED4162A	J37858	FC7663-2R	PHC-J3YF-2UF/FC7663-2R
ED4162A	J37863	FC7663-2R	PHC-J3YF-2UF/FC7663-2R
ED4162A	J37868	FC7663-2R	PHC-J3YF-2UF/FC7663-2R
ED4163A	J37859	FC7663-2R	PHC-J3YF-2UF/FC7663-2R
ED4163A	J37860	FC7663-2R	PHC-J3YF-2UF/FC7663-2R
ED4163A	J37862	FC7663-2R	PHC-J3YF-2UF/FC7663-2R
ED4164A	J37866	FC7663-2R	PHC-J3YF-2UF/FC7663-2R

Affected Blade Serial Numbers (Sorted by Propeller S/N)

Table 1-B, continued

HARTZELL PROPELLER INC.

ALERT SERVICE BULLETIN

HC-ASB-61-322

Propeller - Blade Replacement

<u>Propeller S/N</u>	<u>Blade S/N</u>	<u>Blade Model</u>	<u>Propeller Model</u>
ED4164A	J37869	FC7663-2R	PHC-J3YF-2UF/FC7663-2R
ED4164A	J38160	FC7663-2R	PHC-J3YF-2UF/FC7663-2R
ED4165A	J38177	FC7663-2R	PHC-J3YF-2UF/FC7663-2R
ED4165A	J38180	FC7663-2R	PHC-J3YF-2UF/FC7663-2R
ED4165A	J38188	FC7663-2R	PHC-J3YF-2UF/FC7663-2R
ED4166A	J38179	FC7663-2R	PHC-J3YF-2UF/FC7663-2R
ED4166A	J38181	FC7663-2R	PHC-J3YF-2UF/FC7663-2R
ED4166A	J38186	FC7663-2R	PHC-J3YF-2UF/FC7663-2R
ED4167A	J38183	FC7663-2R	PHC-J3YF-2UF/FC7663-2R
ED4167A	J38184	FC7663-2R	PHC-J3YF-2UF/FC7663-2R
ED4167A	J38185	FC7663-2R	PHC-J3YF-2UF/FC7663-2R
ED4168A	J38178	FC7663-2R	PHC-J3YF-2UF/FC7663-2R
ED4168A	J38182	FC7663-2R	PHC-J3YF-2UF/FC7663-2R
ED4168A	J38187	FC7663-2R	PHC-J3YF-2UF/FC7663-2R
ED4169A	J37967	FC7663B-2R	PHC-J3YF-2UF/FC7663B-2R
ED4169A	J37969	FC7663B-2R	PHC-J3YF-2UF/FC7663B-2R
ED4169A	J37970	FC7663B-2R	PHC-J3YF-2UF/FC7663B-2R
ED4261B	J44694	FC7663-2R	PHC-J3YF-2UF/FC7663-2R
ED4265B	J37861	FC7663-2R	PHC-J3YF-2UF/FC7663-2R
EE3351A	J37654	F8468A-6R	PHC-C3YF-1RF/F8468A-6R
EE3351A	J37656	F8468A-6R	PHC-C3YF-1RF/F8468A-6R
EE3355A	J37653	F8468A-6R	PHC-C3YF-1RF/F8468A-6R
EE3356A	J37655	F8468A-6R	PHC-C3YF-1RF/F8468A-6R
EE3358A	J37634	F8468A-6R	PHC-C3YF-1RF/F8468A-6R
EE3358A	J37636	F8468A-6R	PHC-C3YF-1RF/F8468A-6R
EE3358A	J37637	F8468A-6R	PHC-C3YF-1RF/F8468A-6R
EE3359A	J37639	F8468A-6R	PHC-C3YF-1RF/F8468A-6R
EE3359A	J37640	F8468A-6R	PHC-C3YF-1RF/F8468A-6R
EE3359A	J37642	F8468A-6R	PHC-C3YF-1RF/F8468A-6R
EE3360A	J37625	F8468A-6R	PHC-C3YF-1RF/F8468A-6R
EE3360A	J37630	F8468A-6R	PHC-C3YF-1RF/F8468A-6R
EE3360A	J37643	F8468A-6R	PHC-C3YF-1RF/F8468A-6R
EE3361A	J37648	F8468A-6R	PHC-C3YF-1RF/F8468A-6R
EE3362A	J37649	F8468A-6R	PHC-C3YF-1RF/F8468A-6R

Affected Blade Serial Numbers (Sorted by Propeller S/N)

Table 1-B, continued

HARTZELL PROPELLER INC.

ALERT SERVICE BULLETIN

HC-ASB-61-322

Propeller - Blade Replacement

<u>Propeller S/N</u>	<u>Blade S/N</u>	<u>Blade Model</u>	<u>Propeller Model</u>
EE3362A	J37650	F8468A-6R	PHC-C3YF-1RF/F8468A-6R
EE3363A	J37627	F8468A-6R	PHC-C3YF-1RF/F8468A-6R
EE3363A	J37629	F8468A-6R	PHC-C3YF-1RF/F8468A-6R
EE3363A	J37644	F8468A-6R	PHC-C3YF-1RF/F8468A-6R
EE3364A	J37621	F8468A-6R	PHC-C3YF-1RF/F8468A-6R
EE3364A	J37622	F8468A-6R	PHC-C3YF-1RF/F8468A-6R
EE3364A	J37626	F8468A-6R	PHC-C3YF-1RF/F8468A-6R
EE3365A	J37628	F8468A-6R	PHC-C3YF-1RF/F8468A-6R
EE3365A	J37635	F8468A-6R	PHC-C3YF-1RF/F8468A-6R
EE3365A	J37641	F8468A-6R	PHC-C3YF-1RF/F8468A-6R
EE3366A	J37759	F8468A-6R	PHC-C3YF-1RF/F8468A-6R
EE3366A	J37760	F8468A-6R	PHC-C3YF-1RF/F8468A-6R
EE3366A	J37766	F8468A-6R	PHC-C3YF-1RF/F8468A-6R
EE3367A	J37765	F8468A-6R	PHC-C3YF-1RF/F8468A-6R
EE3367A	J37768	F8468A-6R	PHC-C3YF-1RF/F8468A-6R
EE3367A	J37769	F8468A-6R	PHC-C3YF-1RF/F8468A-6R
EE3368A	J37762	F8468A-6R	PHC-C3YF-1RF/F8468A-6R
EE3368A	J37767	F8468A-6R	PHC-C3YF-1RF/F8468A-6R
EE3368A	J37770	F8468A-6R	PHC-C3YF-1RF/F8468A-6R
EE3369A	J37761	F8468A-6R	PHC-C3YF-1RF/F8468A-6R
EE3369A	J37763	F8468A-6R	PHC-C3YF-1RF/F8468A-6R
EE3369A	J37764	F8468A-6R	PHC-C3YF-1RF/F8468A-6R
EE3370A	J38005	F8468A-6R	PHC-C3YF-1RF/F8468A-6R
EE3370A	J38008	F8468A-6R	PHC-C3YF-1RF/F8468A-6R
EE3370A	J38011	F8468A-6R	PHC-C3YF-1RF/F8468A-6R
EE3373A	J38004	F8468A-6R	PHC-C3YF-1RF/F8468A-6R
EE3373A	J38006	F8468A-6R	PHC-C3YF-1RF/F8468A-6R
EE3374A	J38007	F8468A-6R	PHC-C3YF-1RF/F8468A-6R
EE3374A	J38009	F8468A-6R	PHC-C3YF-1RF/F8468A-6R
EE3374A	J38010	F8468A-6R	PHC-C3YF-1RF/F8468A-6R
EE3375A	J37657	F8468A-8R	PHC-C3YF-1RF/F8468A-8R
EE3375A	J37658	F8468A-8R	PHC-C3YF-1RF/F8468A-8R
EE3375A	J37659	F8468A-8R	PHC-C3YF-1RF/F8468A-8R
EE3376A	J38273	F8468A-6R	PHC-C3YF-1RF/F8468A-6R

Affected Blade Serial Numbers (Sorted by Propeller S/N)

Table 1-B, continued

HARTZELL PROPELLER INC.

ALERT SERVICE BULLETIN

HC-ASB-61-322

Propeller - Blade Replacement

<u>Propeller S/N</u>	<u>Blade S/N</u>	<u>Blade Model</u>	<u>Propeller Model</u>
EE3376A	J38277	F8468A-6R	PHC-C3YF-1RF/F8468A-6R
EE3376A	J38278	F8468A-6R	PHC-C3YF-1RF/F8468A-6R
EE3377A	J38275	F8468A-6R	PHC-C3YF-1RF/F8468A-6R
EE3377A	J38279	F8468A-6R	PHC-C3YF-1RF/F8468A-6R
EE3377A	J38284	F8468A-6R	PHC-C3YF-1RF/F8468A-6R
EE3378A	J38281	F8468A-6R	PHC-C3YF-1RF/F8468A-6R
EE3378A	J38282	F8468A-6R	PHC-C3YF-1RF/F8468A-6R
EE3378A	J38283	F8468A-6R	PHC-C3YF-1RF/F8468A-6R
EE3379A	J38274	F8468A-6R	PHC-C3YF-1RF/F8468A-6R
EE3379A	J38276	F8468A-6R	PHC-C3YF-1RF/F8468A-6R
EE3379A	J38280	F8468A-6R	PHC-C3YF-1RF/F8468A-6R
EE3383A	J38312	F8468A-8R	PHC-C3YF-1RF/F8468A-8R
EE3383A	J38313	F8468A-8R	PHC-C3YF-1RF/F8468A-8R
EE3383A	J38314	F8468A-8R	PHC-C3YF-1RF/F8468A-8R
EE3384A	J38288	F8468A-6R	PHC-C3YF-1RF/F8468A-6R
EE3384A	J38295	F8468A-6R	PHC-C3YF-1RF/F8468A-6R
EE3384A	J38296	F8468A-6R	PHC-C3YF-1RF/F8468A-6R
EE3385A	J38285	F8468A-6R	PHC-C3YF-1RF/F8468A-6R
EE3385A	J38286	F8468A-6R	PHC-C3YF-1RF/F8468A-6R
EE3385A	J38289	F8468A-6R	PHC-C3YF-1RF/F8468A-6R
EE3386A	J38291	F8468A-6R	PHC-C3YF-1RF/F8468A-6R
EE3386A	J38297	F8468A-6R	PHC-C3YF-1RF/F8468A-6R
EE3386A	J38302	F8468A-6R	PHC-C3YF-1RF/F8468A-6R
EE3387A	J38292	F8468A-6R	PHC-C3YF-1RF/F8468A-6R
EE3387A	J38293	F8468A-6R	PHC-C3YF-1RF/F8468A-6R
EE3387A	J38304	F8468A-6R	PHC-C3YF-1RF/F8468A-6R
EE3388A	J38287	F8468A-6R	PHC-C3YF-1RF/F8468A-6R
EE3388A	J38290	F8468A-6R	PHC-C3YF-1RF/F8468A-6R
EE3388A	J38294	F8468A-6R	PHC-C3YF-1RF/F8468A-6R
EE3389A	J38299	F8468A-6R	PHC-C3YF-1RF/F8468A-6R
EE3389A	J38303	F8468A-6R	PHC-C3YF-1RF/F8468A-6R
EE3389A	J38306	F8468A-6R	PHC-C3YF-1RF/F8468A-6R
EE3390A	J38300	F8468A-6R	PHC-C3YF-1RF/F8468A-6R
EE3390A	J38307	F8468A-6R	PHC-C3YF-1RF/F8468A-6R

Affected Blade Serial Numbers (Sorted by Propeller S/N)

Table 1-B, continued

HARTZELL PROPELLER INC.

ALERT SERVICE BULLETIN

HC-ASB-61-322

Propeller - Blade Replacement

<u>Propeller S/N</u>	<u>Blade S/N</u>	<u>Blade Model</u>	<u>Propeller Model</u>
EE3390A	J38308	F8468A-6R	PHC-C3YF-1RF/F8468A-6R
EE3391A	J38574	F8468A-6R	PHC-C3YF-1RF/F8468A-6R
EE3391A	J38575	F8468A-6R	PHC-C3YF-1RF/F8468A-6R
EE3391A	J38583	F8468A-6R	PHC-C3YF-1RF/F8468A-6R
EE3392A	J38579	F8468A-6R	PHC-C3YF-1RF/F8468A-6R
EE3392A	J38581	F8468A-6R	PHC-C3YF-1RF/F8468A-6R
EE3392A	J38582	F8468A-6R	PHC-C3YF-1RF/F8468A-6R
EE3396A	J38573	F8468A-6R	PHC-C3YF-1RF/F8468A-6R
EE3396A	J38576	F8468A-6R	PHC-C3YF-1RF/F8468A-6R
EE3396A	J38584	F8468A-6R	PHC-C3YF-1RF/F8468A-6R
EE3397A	J38577	F8468A-6R	PHC-C3YF-1RF/F8468A-6R
EE3397A	J38578	F8468A-6R	PHC-C3YF-1RF/F8468A-6R
EE3397A	J38580	F8468A-6R	PHC-C3YF-1RF/F8468A-6R
EE3398A	J38684	F8468A-6R	PHC-C3YF-1RF/F8468A-6R
EE3398A	J38692	F8468A-6R	PHC-C3YF-1RF/F8468A-6R
EE3398A	J38693	F8468A-6R	PHC-C3YF-1RF/F8468A-6R
EE3399A	J38683	F8468A-6R	PHC-C3YF-1RF/F8468A-6R
EE3399A	J38688	F8468A-6R	PHC-C3YF-1RF/F8468A-6R
EE3399A	J38691	F8468A-6R	PHC-C3YF-1RF/F8468A-6R
EE3413A	J38298	F8468A-6R	PHC-C3YF-1RF/F8468A-6R
EE3413A	J38305	F8468A-6R	PHC-C3YF-1RF/F8468A-6R
EE3440A	J37749	F8468A-6R	PHC-C3YF-1RF/F8468A-6R
EE3441A	J37753	F8468A-6R	PHC-C3YF-1RF/F8468A-6R
EE3441A	J37755	F8468A-6R	PHC-C3YF-1RF/F8468A-6R
EE3443A	J37750	F8468A-6R	PHC-C3YF-1RF/F8468A-6R
EE3443A	J37756	F8468A-6R	PHC-C3YF-1RF/F8468A-6R
EE3443A	J37758	F8468A-6R	PHC-C3YF-1RF/F8468A-6R
EE3444A	J37754	F8468A-6R	PHC-C3YF-1RF/F8468A-6R
EE3449A	J37751	F8468A-6R	PHC-C3YF-1RF/F8468A-6R
EF228B	J38673	F7694	BHC-J2YF-1BF/F7694
EF228B	J38676	F7694	BHC-J2YF-1BF/F7694
EF229B	J38675	F7694	BHC-J2YF-1BF/F7694
EF230B	J38677	F7694	BHC-J2YF-1BF/F7694
EG89B	J37176	F8468AR	BHC-L2YF-1BF/F8468AR

Affected Blade Serial Numbers (Sorted by Propeller S/N)

Table 1-B, continued

HARTZELL PROPELLER INC.

ALERT SERVICE BULLETIN

HC-ASB-61-322

Propeller - Blade Replacement

<u>Propeller S/N</u>	<u>Blade S/N</u>	<u>Blade Model</u>	<u>Propeller Model</u>
EG90B	J38694	F8468AR	BHC-L2YF-1BF/F8468AR
EG90B	J38695	F8468AR	BHC-L2YF-1BF/F8468AR
EN963B	J37559	F7666A-2	HC-M2YR-1BF/F7666A-2
EN963B	J37560	F7666A-2	HC-M2YR-1BF/F7666A-2
FB1193B	J37473	FC7666A	HC-M2YR-2CEUF/FC7666A
FB1193B	J37478	FC7666A	HC-M2YR-2CEUF/FC7666A
FD309A	J37623	F8468A-6R	PHC-L3YF-1RF/F8468A-6R
FD309A	J37633	F8468A-6R	PHC-L3YF-1RF/F8468A-6R
FD309A	J37638	F8468A-6R	PHC-L3YF-1RF/F8468A-6R
FD310A	J37624	F8468A-6R	PHC-L3YF-1RF/F8468A-6R
FD310A	J37631	F8468A-6R	PHC-L3YF-1RF/F8468A-6R
FD310A	J37632	F8468A-6R	PHC-L3YF-1RF/F8468A-6R
FD311A	J38685	F8468A-6R	PHC-L3YF-1RF/F8468A-6R
FD311A	J38687	F8468A-6R	PHC-L3YF-1RF/F8468A-6R
FD311A	J38689	F8468A-6R	PHC-L3YF-1RF/F8468A-6R
FD312A	J38682	F8468A-6R	PHC-L3YF-1RF/F8468A-6R
FD312A	J38686	F8468A-6R	PHC-L3YF-1RF/F8468A-6R
FD312A	J38690	F8468A-6R	PHC-L3YF-1RF/F8468A-6R
FM1213A	J37520	F7392	HC-E3YR-1RF/F7392
FM1213A	J37521	F7392	HC-E3YR-1RF/F7392
FM1213A	J37526	F7392	HC-E3YR-1RF/F7392
FM1214A	J37524	F7392	HC-E3YR-1RF/F7392
FM1214A	J37525	F7392	HC-E3YR-1RF/F7392
FM1214A	J37528	F7392	HC-E3YR-1RF/F7392
FM1215A	J37522	F7392	HC-E3YR-1RF/F7392
FM1215A	J37523	F7392	HC-E3YR-1RF/F7392
FM1215A	J37527	F7392	HC-E3YR-1RF/F7392
JC20A	J38634	F7392-1	PHC-J3YF-1MF/F7392-1
JC20A	J38635	F7392-1	PHC-J3YF-1MF/F7392-1
JC20A	J38637	F7392-1	PHC-J3YF-1MF/F7392-1
JC21A	J38630	F7392-1	PHC-J3YF-1MF/F7392-1
JC21A	J38633	F7392-1	PHC-J3YF-1MF/F7392-1
JC21A	J38636	F7392-1	PHC-J3YF-1MF/F7392-1
JC22A	J38629	F7392-1	PHC-J3YF-1MF/F7392-1

Affected Blade Serial Numbers (Sorted by Propeller S/N)

Table 1-B, continued

HARTZELL PROPELLER INC.

ALERT SERVICE BULLETIN

HC-ASB-61-322

Propeller - Blade Replacement

<u>Propeller S/N</u>	<u>Blade S/N</u>	<u>Blade Model</u>	<u>Propeller Model</u>
JC22A	J38631	F7392-1	PHC-J3YF-1MF/F7392-1
JC22A	J38632	F7392-1	PHC-J3YF-1MF/F7392-1
unknown	J37474	FC7666A	unknown
unknown	J37475	FC7666A	unknown
unknown	J37476	FC7666A	unknown
unknown	J37477	FC7666A	unknown
unknown	J37509	F7282	unknown
unknown	J37529	F7663-4	unknown
unknown	J37531	F7663-4	unknown
unknown	J37532	F7663-4	unknown
unknown	J37534	F7663-4	unknown
unknown	J37535	F7663-4	unknown
unknown	J37536	F7663-4	unknown
unknown	J37548	F7663R	unknown
unknown	J37551	F7663R	unknown
unknown	J37552	F7663R	unknown
unknown	J37553	F7663R	unknown
unknown	J37554	F7663R	unknown
unknown	J37555	F7663R	unknown
unknown	J37557	F7666A-2	unknown
unknown	J37558	F7666A-2	unknown
unknown	J37617	F8467-7R	unknown
unknown	J37618	F8467-7R	unknown
unknown	J37660	F8475R	unknown
unknown	J37661	F8475R	unknown
unknown	J37662	F8475R	unknown
unknown	J37663	F8475R	unknown
unknown	J37664	F8475R	unknown
unknown	J37665	F8475R	unknown
unknown	J37666	F8475R	unknown
unknown	J37667	F8475R	unknown
unknown	J37668	F8475R	unknown
unknown	J37669	F8475R	unknown
unknown	J37670	F8475R	unknown

Affected Blade Serial Numbers (Sorted by Propeller S/N)

Table 1-B, continued

HARTZELL PROPELLER INC.

ALERT SERVICE BULLETIN

HC-ASB-61-322

Propeller - Blade Replacement

<u>Propeller S/N</u>	<u>Blade S/N</u>	<u>Blade Model</u>	<u>Propeller Model</u>
unknown	J37671	F8475R	unknown
unknown	J37757	F8468A-6R	unknown
unknown	J37878	FC8459-8R	unknown
unknown	J37879	FC8459-8R	unknown
unknown	J37880	FC8459-8R	unknown
unknown	J37881	FC8459-8R	unknown
unknown	J37882	FC8459-8R	unknown
unknown	J37883	FC8459-8R	unknown
unknown	J37884	FC8459-8R	unknown
unknown	J37885	FC8459-8R	unknown
unknown	J37886	FC8459-8R	unknown
unknown	J37887	FC8459-8R	unknown
unknown	J37888	FC8459-8R	unknown
unknown	J37889	FC8459-8R	unknown
unknown	J37890	FC8468-6R	unknown
unknown	J37891	FC8468-6R	unknown
unknown	J37892	FC8468-6R	unknown
unknown	J37893	FC8468-6R	unknown
unknown	J37894	FC8468-6R	unknown
unknown	J37895	FC8468-6R	unknown
unknown	J37908	FC8477A-4	unknown
unknown	J37909	FC8477A-4	unknown
unknown	J37972	FC7663B-2R	unknown
unknown	J37982	F7666A	unknown
unknown	J37983	F7666A	unknown
unknown	J37988	F8465-7R	unknown
unknown	J37989	F8465-7R	unknown
unknown	J37990	F8465-7R	unknown
unknown	J37991	F8465-7R	unknown
unknown	J37992	F8465-7R	unknown
unknown	J37993	F8465-7R	unknown
unknown	J37994	F8465-7R	unknown
unknown	J37995	F8465-7R	unknown
unknown	J37996	F8465-7R	unknown

Affected Blade Serial Numbers (Sorted by Propeller S/N)

Table 1-B, continued

HARTZELL PROPELLER INC.

ALERT SERVICE BULLETIN

HC-ASB-61-322

Propeller - Blade Replacement

<u>Propeller S/N</u>	<u>Blade S/N</u>	<u>Blade Model</u>	<u>Propeller Model</u>
unknown	J37997	F8465-7R	unknown
unknown	J37998	F8465-7R	unknown
unknown	J37999	F8465-7R	unknown
unknown	J38000	F8465-7R	unknown
unknown	J38001	F8465-7R	unknown
unknown	J38002	F8465-7R	unknown
unknown	J38003	F8465-7R	unknown
unknown	J38075	F7282	unknown
unknown	J38079	F7282	unknown
unknown	J38204	FC7666A-2	unknown
unknown	J38206	FC7666A-2	unknown
unknown	J38674	F7694-4TX	unknown
unknown	J38678	F7694-4TX	unknown
unknown	J38681	F8475R	unknown
unknown	J38784	FC7479-2R	unknown
unknown	J38790	FC7479-2R	unknown

Affected Blade Serial Numbers (Sorted by Propeller S/N)
Table 1-B, continued

HARTZELL PROPELLER INC.

ALERT SERVICE BULLETIN

HC-ASB-61-322

Propeller - Blade Replacement

(This page is intentionally blank.)

HARTZELL PROPELLER INC.
ALERT SERVICE BULLETIN APPENDIX
HC-ASBA-61-322
Propeller - Blade Replacement

1. Eligibility

- A. Hartzell "Y" shank, aluminum blades listed in Table 1-() of this Alert Service Bulletin are eligible for this program.

2. Recommended Service Facilities

- A. Hartzell Propeller has a worldwide network of Recommended Service Facilities that are recommended by Hartzell Propeller for overhaul and repair of our products.
- B. Each service facility must meet standard FAA requirements and additional Hartzell Propeller requirements before being recommended by Hartzell Propeller. Each service facility is audited by Hartzell Propeller to verify the continuation of the standards.
- C. Hartzell Propeller recommends that you use one of these service facilities when having your propeller overhauled or repaired.
- D. For a current list of Hartzell Propeller Recommended Service Facilities, contact Hartzell Product Support or refer to the Hartzell Propeller website at www.hartzellprop.com.

3. Special Pricing Program

- A. Eligible blades that qualify for any one of the following Special Pricing Programs must procure replacement blades from Hartzell Propeller in accordance with this Appendix. Allow for manufacturing lead time.
 - (1) Hartzell Propeller will not reimburse the purchase cost of replacement blades.
- B. For assembled propellers that are within the overhaul limitations specified in accordance with Hartzell Service Letter HC-SL-61-61Y:
 - (1) This special pricing program expires at the next recommended overhaul interval in accordance with Hartzell Service Letter HC-SL-61-61Y or February 28, 2017, whichever occurs first.
 - (2) Hartzell Propeller will provide free of charge a replacement blade of the same model as each affected blade.
 - (a) Replacement blades will only be shipped to a certified propeller repair facility. Replacement blades will NOT be shipped directly to end users.
 - (3) Hartzell Propeller will provide replacement parts required for reseal of the propeller free of charge to the authorized service facility.

HARTZELL PROPELLER INC.

ALERT SERVICE BULLETIN APPENDIX

HC-ASBA-61-322

Propeller - Blade Replacement

(4) Hartzell Propeller will cover standard ground shipping, where required, to transport the propeller to an authorized service facility.

(5) Hartzell Propeller will provide labor coverage as follows:

(a) Propeller removal and installation 2.0 hours

(b) Replacement of the affected blades and reseal of the propeller

<u>Propeller Model</u>	<u>Man-hours</u>
------------------------	------------------

()HC()2Y()-()	4.0 hours
-------------------	-----------

()HC()3Y()-()	5.0 hours
-------------------	-----------

()HC()4Y()-()	6.0 hours
-------------------	-----------

(c) Dynamic balance 3.0 hours

NOTE: If blade replacement is performed in conjunction with propeller overhaul, the allowable labor coverage will be applied to the overhaul.

(6) The following documentation must be provided to Hartzell Product Support in order to qualify for this warranty program:

(a) A completed and signed Alert Service Bulletin Compliance/Order Form.

(b) The propeller service facility completing the blade replacement must retire the affected blade(s) from service in accordance with Hartzell Standard Practices Manual 202A (61-01-02).

(c) If the propeller has been previously overhauled, provide a copy of the maintenance release tag, FAA Form 8130-3 or JAA Form 1 indicating current propeller overhaul, and/or a copy of applicable log book pages that must include overhaul date, TSN at overhaul, and current TSO.

(d) If an overhaul is not yet due in accordance with Hartzell Service Letter HC-SL-61-61Y, provide a copy of applicable log book pages that must include propeller installation date, and current TSN.

HARTZELL PROPELLER INC.
ALERT SERVICE BULLETIN APPENDIX
HC-ASBA-61-322
Propeller - Blade Replacement

- (7) The piece from each retired blade must be returned to Hartzell Product Support in accordance with the Accomplishment Instructions in this Alert Service Bulletin. Refer to Figure 1 in this Alert Service Bulletin.
- (a) **The required piece(s) must be received by Hartzell Product Support within six (6) calendar months from receipt of the replacement blades at the service facility.**
- (b) **Failure to return the required blade piece(s) in accordance with this Alert Service Bulletin and Appendix will result in a charge to the propeller service facility for the full list price of the replacement blades.**

C. All other pricing programs, for stock/inventory and assemblies not within Hartzell Service Letter HC-SL-61-61Y requirements, expired on February 29, 2012.

D. Replacement Blade Order Administration

- (1) Replacement blade orders will be administered as follows:
- (a) Upon receipt of the completed Alert Service Bulletin Compliance/Order Form and required documentation, Hartzell Product Support will enter an order for the replacement blade(s).
- 1 Replacement blades will be shipped as soon as available. Allow for manufacturing lead time.
- 2 This information is applicable only to those affected blades which meet the terms and conditions detailed in section 3.A., 3.B., or 3.C of this Appendix.
- (b) The piece from each retired blade must be returned to Hartzell Product Support in accordance with the Accomplishment Instructions in this Alert Service Bulletin. Refer to Figure 1 in this Alert Service Bulletin.
- 1 **The required piece(s) must be received by Hartzell Product Support within six (6) calendar months from receipt of the replacement blades at the service facility.**
- 2 **Failure to return the required blade piece(s) in accordance with this Alert Service Bulletin and Appendix will result in a charge for the full list price of the replacement blades.**

HARTZELL PROPELLER INC.

ALERT SERVICE BULLETIN APPENDIX

HC-ASBA-61-322

Propeller - Blade Replacement

- (c) For propeller assemblies eligible in accordance with section 3.A. in this Appendix:
- 1 Upon completion of the Accomplishment Instructions in this Alert Service Bulletin (including sending the Compliance Form), the authorized propeller service facility must contact Hartzell Product Support for the warranty reference number applicable to the propeller assembly.
 - 2 The service facility must provide to Hartzell Product Support a detailed invoice identifying Hartzell components required for reseal, labor hours by task as identified in section 3.A. of this Appendix, labor rate, any other allowable charges, and the warranty reference number provided by Hartzell Product Support.
 - 3 Hartzell Product Support will enter an order for approved components and allowable charges upon receipt of qualifying invoices.

E. Contact Information and Shipping Address for retired blade pieces.

Hartzell Propeller Inc.
Attn: Hartzell Product Support - ASB322
One Propeller Place
Piqua, Ohio 45356-2634 USA
Phone: (001) 937.778.4379
Fax: (001) 937.778.4391
E-mail: techsupport@hartzellprop.com

HARTZELL PROPELLER INC.

ALERT SERVICE BULLETIN APPENDIX

HC-ASBA-61-322

Propeller - Blade Replacement

Compliance/Order Form

Replacement blades are offered at no charge for eligible propellers only. Required documentation must accompany this Compliance/Order Form to verify eligibility. Failure to return the required blade piece(s) in accordance with this Appendix will result in a charge for the full list price of the replacement blade(s). A PO number must be provided with this order for use only in the event the blade piece(s) are not received as required.

Owner Information: (Replacement blades will ONLY be shipped to a Service Facility.)

Name: _____ Phone: _____
Address: _____ Fax: _____
City: _____ E-Mail: _____
State: _____ Zip/Postal Code: _____
Country: _____

Service Facility/Shipping Location: (Replacement blades will ONLY be shipped to a Service Facility.)

Company: _____ Phone: _____
Contact Name: _____ Fax: _____
Address: _____ E-Mail: _____
City: _____ Zip/Postal Code: _____
State: _____ Country: _____

PO# is required: _____

I understand that affected blades must be permanently retired from service and a piece returned to Hartzell Propeller. If the affected propeller was not maintained in accordance with Hartzell Service Letter HC-SL-61-61Y, an overhaul is required in conjunction with this blade replacement for warranty eligible replacements. My signature indicates my understanding of these requirements and agreement to follow these requirements.

Signature: _____

Check here if this form is NOT an order for replacement blades (indicates COMPLIANCE only).

If blades are from open stock/inventory, propeller information may be left blank:

Propeller Model: _____ Propeller S/N: _____
Propeller TSN: _____ Propeller TSO: _____

Date of Last Propeller Overhaul: _____

If not overhauled, provide Date of Propeller Installation: _____

List each affected/retired blade by serial number and model:

Table with 2 columns: Blade S/N, Blade Model. Multiple rows for listing affected blades.

Send this Compliance/Order Form to: (Propellers/blades are not in compliance if this completed form is not received.)

Hartzell Product Support

Fax: (001) 937.778.4391

E-Mail: warranty@hartzellprop.com OR techsupport@hartzellprop.com

NOTE: This form is available electronically on our website at www.hartzellprop.com

Hartzell use only - do not write below this line

Warranty #: _____ Authorized By: _____

HARTZELL PROPELLER INC.
ALERT SERVICE BULLETIN APPENDIX
HC-ASBA-61-322
Propeller - Blade Replacement

(This page is intentionally blank.)